

bs-13252R**[Primary Antibody]****G3BP2 Rabbit pAb****BioSS**
ANTIBODIES

www.bioss.com.cn

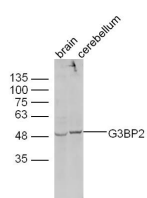
sales@bioss.com.cn

techsupport@bioss.com.cn

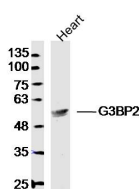
400-901-9800

— DATASHEET —

Host: Rabbit	Isotype: IgG	Applications: WB (1:500-2000)
Clonality: Polyclonal		Reactivity: Mouse, Rat (predicted: Human, Rabbit, Pig, Sheep, Cow, Chicken, Dog, Horse)
GeneID: 9908	SWISS: Q9UN86	Predicted MW.: 54 kDa
Target: G3BP2		Subcellular Location: Cytoplasm
Immunogen: KLH conjugated synthetic peptide derived from human G3BP2: 21-120/482.		
Purification: affinity purified by Protein A		
Concentration: 1mg/ml		
Storage: 0.01M TBS (pH7.4) with 1% BSA, 0.02% Proclin300 and 50% Glycerol. Shipped at 4°C. Store at -20°C for one year. Avoid repeated freeze/thaw cycles.		
Background: G3BP2 (GTPase activating protein (SH3 domain) binding protein 2) is a 482 amino acid protein that localizes to the cytoplasm and contains one NTF2 domain and one RRM domain. Existing as two alternatively spliced isoforms, G3BP2 acts as a scaffold protein that is thought to be involved in mRNA transport and is subject to post-translational methylation on select arginine residues. The gene encoding G3BP2 maps to human chromosome 4, which encodes nearly 6% of the human genome and has the largest gene deserts (regions of the genome with no protein encoding genes) of all of the human chromosomes. Defects in some of the genes located on chromosome 4 are associated with Huntington's disease, Ellis-van Creveld syndrome, methylmalonic acidemia and polycystic kidney disease.		

— VALIDATION IMAGES —

Sample: Brain (Mouse) Lysate at 40 ug
Cerebellum (Mouse) Lysate at 40 ug
Primary: Anti-G3BP2 (bs-13252R) at 1/300 dilution
Secondary: IRDye800CW Goat Anti-Rabbit IgG at 1/20000 dilution
Predicted band size: 54 kD
Observed band size: 54 kD



Sample: Heart (Rat) Lysate at 40 ug
Primary: Anti-G3BP2 (bs-13252R) at 1/300 dilution
Secondary: IRDye800CW Goat Anti-Rabbit IgG at 1/20000 dilution
Predicted band size: 54 kD
Observed band size: 54 kD