

bs-12949R**[Primary Antibody]****CRTAP Rabbit pAb****BioSS**
ANTIBODIES

www.bioss.com.cn

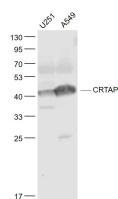
sales@bioss.com.cn

techsupport@bioss.com.cn

400-901-9800

— DATASHEET —

Host: Rabbit	Isotype: IgG	Applications: WB (1:500-2000)
Clonality: Polyclonal		Reactivity: Human (predicted: Mouse, Rat, Rabbit, Pig, Chicken, Dog, Horse)
GeneID: 10491	SWISS: O75718	
Target: CRTAP		Predicted MW.: 44 kDa
Immunogen: KLH conjugated synthetic peptide derived from human CRTAP: 201-300/401.		Subcellular Location: Secreted
Purification: affinity purified by Protein A		
Concentration: 1mg/ml		
Storage: 0.01M TBS (pH7.4) with 1% BSA, 0.02% Proclin300 and 50% Glycerol. Shipped at 4°C. Store at -20°C for one year. Avoid repeated freeze/thaw cycles.		
Background: CRTAP is a secreted protein localizing to the extracellular space that plays a role in collagen post-translational modifications, extracellular fibril assembly and intracellular trafficking. CRTAP is widely expressed with predominant expression in articular chondrocytes. It contains a signal peptide and a tetratricopeptide-like helical domain and is essential for normal bone formation. In the endoplasmic reticulum (ER), CRTAP forms a complex with Gros1 and CyPB (cyclophilin B) and is required for the efficient 3-hydroxylation of target prolyl residues in Collagen Type I molecules, the major structural proteins of skin and bone. Mutations in the gene encoding CRTAP can lead to autosomal recessive osteogenesis imperfecta (OI) type 7 and type 2B. OI, also known as brittle bone disease, is characterized by bone fragility and susceptibility to fractures. OI type 7 is a mild form of this disorder, while OI type 2B is a neonatal lethal condition.		

— VALIDATION IMAGES —

Sample: U251(Human) Cell Lysate at 30 ug
A549(Human) Cell Lysate at 30 ug Primary: Anti-CRTAP (bs-12949R) at 1/1000 dilution
Secondary: IRDye800CW Goat Anti-Rabbit IgG at 1/20000 dilution Predicted band size: 44 kD
Observed band size: 44 kD