

bs-25352R**[Primary Antibody]****PTPN11 Rabbit pAb****BioSS**
ANTIBODIES

www.bioss.com.cn

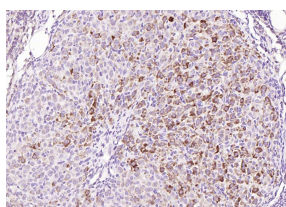
sales@bioss.com.cn

techsupport@bioss.com.cn

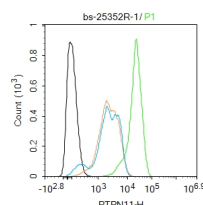
400-901-9800

— DATASHEET —

Host: Rabbit	Isotype: IgG	Applications: IHC-P (1:100-500)
Clonality: Polyclonal		IHC-F (1:400-800)
GeneID: 5781	SWISS: Q06124	IF (1:100-500)
Target: PTPN11		Flow-Cyt (1ug/Test)
Immunogen: KLH conjugated synthetic peptide derived from human PTPN11: 271-370/593.		Reactivity: Human, Mouse (predicted: Rat, Pig, Sheep, Cow, Chicken, Horse)
Purification: affinity purified by Protein A		
Concentration: 1mg/ml		Predicted MW.: 68 kDa
Storage: 0.01M TBS (pH7.4) with 1% BSA, 0.02% Proclin300 and 50% Glycerol. Shipped at 4°C. Store at -20°C for one year. Avoid repeated freeze/thaw cycles.		Subcellular Location: Cytoplasm
Background: The steady state of protein tyrosyl phosphorylation in cells is regulated by the opposing action of tyrosine kinases and protein tyrosine phosphatases (PTPs). Several groups have independently identified a non transmembrane PTP, designated SHPTP1 (also known as PTP1C, HCP and SHP), which is primarily expressed in hematopoietic cells and characterized by the presence of two SH2 domains N terminal to the PTP domain. A second and much more widely expressed PTP with SH2 domains, SHPTP2 (also designated PTP1D and Syp), has been identified. SHP2 is a protein tyrosine phosphatase that is widely expressed and plays a regulatory role in various cell		

— VALIDATION IMAGES —

Paraformaldehyde-fixed, paraffin embedded (mouse ovary); Antigen retrieval by boiling in sodium citrate buffer (pH6.0) for 15min; Block endogenous peroxidase by 3% hydrogen peroxide for 20 minutes; Blocking buffer (normal goat serum) at 37°C for 30min; Antibody incubation with (PTPN11) Polyclonal Antibody, Unconjugated (bs-25352R) at 1:200 overnight at 4°C, followed by operating according to SP Kit(Rabbit) (sp-0023) instructions and DAB staining.



Blank control (black line) :HepG2. Primary Antibody (green line): Rabbit Anti-PTPN11 antibody (bs-25352R) Dilution:1ug/Test; Secondary Antibody (white blue line) : Goat anti-rabbit IgG-AF488 Dilution: 0.5ug/Test. Isotype control (orange line) : Normal Rabbit IgG Protocol The cells were fixed with 4% PFA (10min at room temperature) and then permeabilized with 90% ice-cold methanol for 20 min at -20°C, The cells were then incubated in 5%BSA to block non-specific protein-protein interactions for 30 min at room temperature .Cells stained with Primary Antibody for 30 min at room temperature. The secondary antibody used for 40 min at room temperature. Acquisition of 20,000 events was performed.