

**bs-34225R****[ Primary Antibody ]****CNR1 Rabbit pAb****BioSS**  
**ANTIBODIES**

www.bioss.com.cn

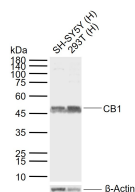
sales@bioss.com.cn

techsupport@bioss.com.cn

400-901-9800

**— DATASHEET —**

|  |                     |  |
|--|---------------------|--|
| <b>Host:</b> Rabbit  | <b>Isotype:</b> IgG | <b>Applications:</b> <b>WB</b> (1:500-2000)<br><b>ELISA</b> (1:5000-10000) |
| <b>Clonality:</b> Polyclonal   |                     | <b>Reactivity:</b> Human   |
| <b>GeneID:</b> 1268  |                     |  |
| <b>Target:</b> CNR1  |                     |  |
| <b>Purification:</b> affinity purified by Protein A  |                     |  |
| <b>Concentration:</b> 1mg/ml   |                     | <b>Predicted MW.:</b> 52 kDa   |
| <b>Storage:</b> PBS with 0.02% Proclin300.<br>Shipped at 4°C. Store at -20°C for one year. Avoid repeated freeze/thaw cycles.  |                     | <b>Subcellular Location:</b> Cell membrane                                 |
| <b>Background:</b> This gene encodes one of two cannabinoid receptors. The cannabinoids, principally delta-9-tetrahydrocannabinol and synthetic analogs, are psychoactive ingredients of marijuana. The cannabinoid receptors are members of the guanine-nucleotide-binding protein (G-protein) coupled receptor family, which inhibit adenylate cyclase activity in a dose-dependent, stereoselective and pertussis toxin-sensitive manner. The two receptors have been found to be involved in the cannabinoid-induced CNS effects (including alterations in mood and cognition) experienced by users of marijuana. Multiple transcript variants encoding two different protein isoforms have been described for this gene. [provided by RefSeq, May 2009] |                     |  |

**— VALIDATION IMAGES —**

Sample: Lane 1: Human SH-SY5Y cell lysates  
Lane 2: Human 293T cell lysates Primary: Anti-CB1 (bs-34225R) at 1/1000 dilution Secondary: IRDye800CW Goat Anti-Rabbit IgG at 1/20000 dilution Predicted band size: 52 kDa Observed band size: 47 kDa