

bs-12940R**[Primary Antibody]****BioSS**
ANTIBODIES

www.bioss.com.cn

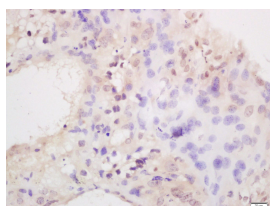
sales@bioss.com.cn

techsupport@bioss.com.cn

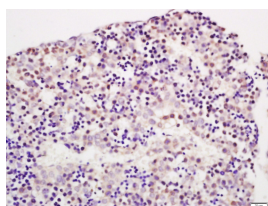
400-901-9800

Placental lactogen I+II Rabbit pAb**— DATASHEET —**

Host: Rabbit	Isotype: IgG	Applications: IHC-P (1:100-500)
Clonality: Polyclonal		IHC-F (1:100-500)
GeneID: 1442	SWISS: P0DML3	IF (1:100-500)
Target: Placental lactogen I+II		Reactivity: Human, Mouse
Immunogen: KLH conjugated synthetic peptide derived from human CSH2/Placental lactogen I/II: 110-217/217.		
Purification: affinity purified by Protein A		Predicted MW.: 22 kDa
Concentration: 1mg/ml		Subcellular Location: Secreted
Storage: 0.01M TBS (pH7.4) with 1% BSA, 0.02% Proclin300 and 50% Glycerol. Shipped at 4°C. Store at -20°C for one year. Avoid repeated freeze/thaw cycles.		
Background: Placental lactogens, also referred to as chorionic somatomammotropin hormones, are protein hormones. They are produced in the mammalian placenta and are similar in structure and function to growth hormones. Together, placental lactogens and growth factors play an essential role to assure successful lactation after pregnancy. Placental lactogens also modify the metabolic state of the mother during pregnancy to supply energy to the fetus. Placental lactogen I is a member of the somatotropin/prolactin family of hormones. The proteins in this family are crucial in mammalian growth control. Placental lactogen I is expressed primarily during mid-pregnancy, and it has been reported that DNA methylation regulates its tissue expression in rats. Placental lactogen II is expressed later in pregnancy and, in mice, its secretion is regulated by the inhibitory control of GH, the concentration of which increases rapidly at the beginning of the last half of pregnancy.		

— VALIDATION IMAGES —

Tissue/cell: mouse placenta tissue; 4% Paraformaldehyde-fixed and paraffin-embedded; Antigen retrieval: citrate buffer (0.01M, pH 6.0), Boiling bathing for 15min; Block endogenous peroxidase by 3% Hydrogen peroxide for 30min; Blocking buffer (normal goat serum,C-0005) at 37°C for 20 min; Incubation: Anti-Placental lactogen I+II Polyclonal Antibody, Unconjugated(bs-12940R) 1:200, overnight at 4°C, followed by conjugation to the secondary antibody(SP-0023) and DAB(C-0010) staining



Tissue/cell: mouse embryo tissue; 4% Paraformaldehyde-fixed and paraffin-embedded; Antigen retrieval: citrate buffer (0.01M, pH 6.0), Boiling bathing for 15min; Block endogenous peroxidase by 3% Hydrogen peroxide for 30min; Blocking buffer (normal goat serum,C-0005) at 37°C for 20 min; Incubation: Anti-Placental lactogen I+II Polyclonal Antibody, Unconjugated(bs-12940R) 1:200, overnight at 4°C, followed by conjugation to the secondary antibody(SP-0023) and DAB(C-0010) staining