

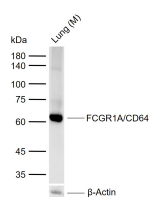
**bs-25232R****[ Primary Antibody ]****FCGR1A/CD64 Rabbit pAb****BioSS**  
**ANTIBODIES**

www.bioss.com.cn

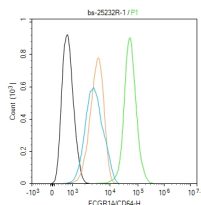
sales@bioss.com.cn

techsupport@bioss.com.cn

400-901-9800

**— DATASHEET —****Host:** Rabbit**Isotype:** IgG**Clonality:** Polyclonal**Target:** FCGR1A/CD64**Immunogen:** KLH conjugated synthetic peptide derived from mouse FCGR1A/CD64 : 131-230/404. < Extracellular >**Purification:** affinity purified by Protein A**Concentration:** 1mg/ml**Storage:** 0.01M TBS (pH7.4) with 1% BSA, 0.02% Proclin300 and 50% Glycerol.  
Shipped at 4°C. Store at -20°C for one year. Avoid repeated freeze/thaw cycles.**Background:** This gene encodes a protein that plays an important role in the immune response. This protein is a high-affinity Fc-gamma receptor. The gene is one of three related gene family members located on chromosome 1. [provided by RefSeq, Jul 2008]**Applications:** WB (1:500-2000)**Flow-Cyt** (1ug/Test)**Reactivity:** Mouse**Predicted  
MW.:** 41 kDa**Subcellular  
Location:** Cell membrane**— VALIDATION IMAGES —**

Sample: Lane 1: Mouse Lung tissue lysates  
 Primary: Anti-FCGR1A/CD64 (bs-25232R) at 1/300 dilution  
 Secondary: IRDye800CW Goat Anti-Rabbit IgG at 1/20000 dilution  
 Predicted band size: 41 kDa  
 Observed band size: 62 kDa



Blank control (black line) : Raw264.7. Primary Antibody (green line): Rabbit Anti-CD64 antibody (bs-25232R) Dilution: 1ug/Test; Secondary Antibody (white/blue line) : Goat Anti-rabbit IgG-AF488 Dilution: 0.5ug/Test. Isotype control (orange line) : Normal Rabbit IgG Protocol. The cells were incubated in 5% BSA to block non-specific protein-protein interactions for 30 min at room temperature. Cells stained with Primary Antibody for 30 min at room temperature. The secondary antibody was used for 40 min at room temperature. Acquisition of 20,000 events was performed.