

bs-13002R**[Primary Antibody]****DIAPH2 Rabbit pAb****BioSS**
ANTIBODIES

www.bioss.com.cn

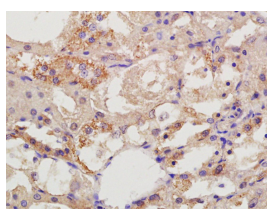
sales@bioss.com.cn

techsupport@bioss.com.cn

400-901-9800

— DATASHEET —

Host: Rabbit	Isotype: IgG	Applications: IHC-P (1:100-500) IHC-F (1:100-500) IF (1:100-500) Reactivity: Rat (predicted: Human, Rabbit, Dog, Horse) Predicted MW.: 125 kDa Subcellular Location: Cytoplasm
Clonality: Polyclonal		
GeneID: 1730	SWISS: O60879	
Target: DIAPH2		
Immunogen: KLH conjugated synthetic peptide derived from human DIAPH2/Dia2: 901-1101/1101.		
Purification: affinity purified by Protein A		
Concentration: 1mg/ml		
Storage: 0.01M TBS (pH7.4) with 1% BSA, 0.02% Proclin300 and 50% Glycerol. Shipped at 4°C. Store at -20°C for one year. Avoid repeated freeze/thaw cycles.		
Background: The product of this gene belongs to the diaphanous subfamily of the formin homology family of proteins. This gene may play a role in the development and normal function of the ovaries. Defects in this gene have been linked to premature ovarian failure 2. Alternatively spliced transcript variants encoding different isoforms have been identified. [provided by RefSeq, Jul 2008]		

— VALIDATION IMAGES —

Tissue/cell: rat kidney tissue; 4%
Paraformaldehyde-fixed and paraffin-
embedded; Antigen retrieval: citrate buffer (0.01M, pH 6.0), Boiling bathing for 15min; Block
endogenous peroxidase by 3% Hydrogen
peroxide for 30min; Blocking buffer (normal goat
serum, C-0005) at 37°C for 20 min; Incubation:
Anti-DIAPH2 Polyclonal Antibody,
Unconjugated(bs-R) 1:200, overnight at 4°C,
followed by conjugation to the secondary
antibody(SP-0023) and DAB(C-0010) staining