

bs-12918R**[Primary Antibody]****phospho-C-REL (Ser503) Rabbit pAb****Bioss**
ANTIBODIES

www.bioss.com.cn

sales@bioss.com.cn

techsupport@bioss.com.cn

400-901-9800

— DATASHEET —

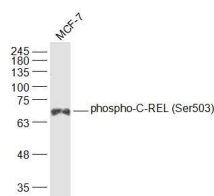
Host: Rabbit	Isotype: IgG
Clonality: Polyclonal	
GeneID: 5966	SWISS: Q04864
Target: C-REL (Ser503)	
Immunogen: KLH conjugated synthesised phosphopeptide derived from human C-REL around the phosphorylation site of Ser503: TS(p-S)DS.	
Purification: affinity purified by Protein A	
Concentration: 1mg/ml	
Storage: 0.01M TBS (pH7.4) with 1% BSA, 0.02% Proclin300 and 50% Glycerol. Shipped at 4°C. Store at -20°C for one year. Avoid repeated freeze/thaw cycles.	
Background: The REL gene encodes c-Rel, a transcription factor that is a member of the Rel/NFκB family, which also includes RELA (MIM 164014), RELB (604758), NFκB1 (MIM 164011), and NFκB2 (MIM 164012). These proteins are related through a highly conserved N-terminal region termed the 'Rel domain,' which is responsible for DNA binding, dimerization, nuclear localization, and binding to the NFκB inhibitor (MIM 164008) (Belguise and Sonenshein, 2007 [PubMed 18037997]).[supplied by OMIM, May 2008].	

Applications: **WB** (1:500-2000)
Flow-Cyt (2ug/Test)
ICC/IF (1:25)

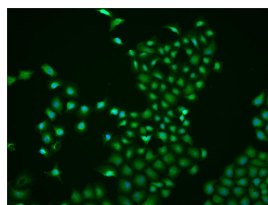
Reactivity: Human

Predicted
MW.: 69 kDa

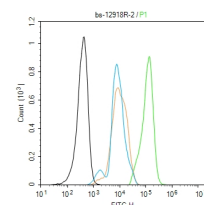
Subcellular
Location: Nucleus

— VALIDATION IMAGES —

Sample: MCF-7(Human) Cell Lysate at 30 ug
 Primary: Anti-phospho-C-REL (Ser503)
 (bs-12918R) at 1/1000 dilution Secondary:
 IRDye800CW Goat Anti-Rabbit IgG at 1/20000
 dilution Predicted band size: 69 kD Observed
 band size: 69 kD



Hela cell; 4% Paraformaldehyde-fixed; Triton X-100 at room temperature for 20 min; Blocking buffer (normal goat serum, C-0005) at 37°C for 20 min; Antibody incubation with (phospho-C-REL (Ser503)) polyclonal Antibody, Unconjugated (bs-12918R) 1:25, 90 minutes at 37°C; followed by a conjugated Goat Anti-Rabbit IgG antibody at 37°C for 90 minutes, DAPI (blue, C02-04002) was used to stain the cell nuclei.



Blank control (black line) :Hela. Primary Antibody (green line): Rabbit Anti-phospho-C-REL (Ser503) antibody (bs-12918R) Dilution:2ug/Test; Secondary Antibody (white blue line) : Goat anti-rabbit IgG-FITC Dilution: 0.5ug/Test. Isotype control (orange line) : Normal Rabbit IgG Protocol The cells were fixed with 4% PFA (10min at room temperature)and then permeabilized with 90% ice-cold methanol for 20 min at -20°C, The cells were then incubated in 5%BSA to block non-specific protein-protein interactions for 30 min at room temperature .Cells stained with Primary Antibody for 30 min at room temperature. The secondary antibody used for 40 min at room temperature. Acquisition of 20,000 events was performed.

— SELECTED CITATIONS —

- **[IF=3.23]** Lee E-J, Lee SJ, Kim J-H, Kim K-J, Yang S-H, Jeong K-Y, et al. (2016) Radiation Inhibits Interleukin-12 Production via Inhibition of C-Rel through the Interleukin-6/ Signal Transducer and Activator of Transcription 3 Signaling Pathway in Dendritic Cells. PLoS ONE 11(1): e0146463. WB ;="Mouse". 26745884

Important Note: This product as supplied is intended for research use only, not for use in human, therapeutic or diagnostic applications.