

---

## BPY2 Rabbit pAb

Catalog Number: bs-12882R

Target Protein: BPY2

Concentration: 1mg/ml

Form: Liquid

Host: Rabbit

Clonality: Polyclonal

Isotype: IgG

Applications: WB (1:500-2000)

Reactivity: Human

Predicted MW: 12 kDa

Entrez Gene: 442867

Swiss Prot: O14599

Source: KLH conjugated synthetic peptide derived from human BPY2: 51-106/106.

Purification: affinity purified by Protein A

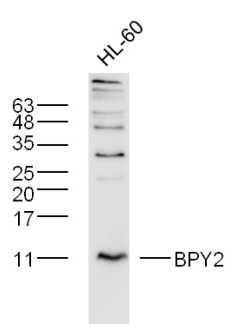
Storage: 0.01M TBS (pH7.4) with 1% BSA, 0.02% Proclin300 and 50% Glycerol.

Shipped at 4°C. Store at -20°C for one year. Avoid repeated freeze/thaw cycles.

**Background:** Mammalian spermatogenesis is a complex developmental process. Mutations at multiple loci and in structurally and functionally disparate genes in the genome affect gametogenesis. The analysis of mutations has provided insight into biochemical pathways required for completion of this process. The basic protein on Y chromosome 2 gene (BPY2, also designated VCY2) is located in a frequently deleted azoospermia factor c region. Three copies (paralogs) of the BPY2 gene (BPY2A, BPY2B, BPY2C) reside in the AZFc region. BPY2 protein expression is localized to the nuclei of spermatogonia, spermatocytes and round spermatids, but is absent from elongated spermatids. Impaired expression of BPY2 in infertile men suggests its involvement in male germ cell development. BPY2 interacts with MAP-1S, which shares homology with microtubule-associated proteins (MAPs), suggesting a role for BPY2 within the cytoskeletal network.

### VALIDATION IMAGES

---



Sample: HL-60 Cell (Human) Lysate at 40 ug Primary: Anti-BPY2 (bs-12882R) at 1/300 dilution Secondary: IRDye800CW Goat Anti-Rabbit IgG at 1/20000 dilution Predicted band size: 12 kD Observed band size: 12 kD