

**bsm-60413M****[ Primary Antibody ]****BioSS**  
ANTIBODIES

www.bioss.com.cn

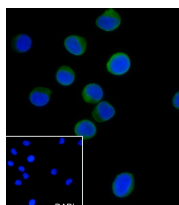
sales@bioss.com.cn

techsupport@bioss.com.cn

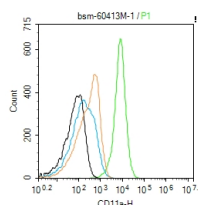
400-901-9800

**CD11a Recombinant Mouse mAb****— DATASHEET —**

<b>Host:</b> Mouse	<b>Isotype:</b> IgG	<b>Applications:</b> Flow-Cyt (1ug/Test) <b>ICC/IF</b> (1:50)  <b>Reactivity:</b> Human  <b>Predicted MW.:</b> 126 kDa  <b>Subcellular Location:</b> Cell membrane
<b>Clonality:</b> Recombinant	<b>CloneNo.:</b> A13C2	
<b>GeneID:</b> 3683	<b>SWISS:</b> P20701	
<b>Target:</b> CD11a		
<b>Purification:</b> affinity purified by Protein G		
<b>Concentration:</b> 1mg/ml		
<b>Storage:</b> 0.01M TBS (pH7.4) with 1% BSA, 0.02% Proclin300 and 50% Glycerol. Shipped at 4°C. Store at -20°C for one year. Avoid repeated freeze/thaw cycles.		
<b>Background:</b> ITGAL encodes the integrin alpha L chain. Integrins are heterodimeric integral membrane proteins composed of an alpha chain and a beta chain. This l-domain containing alpha integrin combines with the beta 2 chain (ITGB2) to form the integrin lymphocyte function-associated antigen-1 (LFA-1), which is expressed on all leukocytes. LFA-1 plays a central role in leukocyte intercellular adhesion through interactions with its ligands, ICAMs 1-3 (intercellular adhesion molecules 1 through 3), and also functions in lymphocyte costimulatory signaling. Two transcript variants encoding different isoforms have been found for this gene. [provided by RefSeq, Jul 2008]		

**— VALIDATION IMAGES —**

Cell line: Jurkat Fixative: 4% Paraformaldehyde  
 Permeabilization: 0.1% Triton X-100 Primary Ab  
 dilution: 1:50 Primary incubation condition: 4°C  
 overnight Secondary Ab: Goat Anti-Mouse IgG  
 Nuclear counter stain: DAPI (Blue) Comment:  
 Color green is the positive signal for  
 bsm-60413M



Blank control:Raji. Primary Antibody (green line):  
 Mouse Anti-CD11a antibody (bsm-60413M)  
 Dilution: 1:100; Secondary Antibody : Goat anti-  
 mouse IgG-FITC Dilution: 0.5ug/Test. Protocol  
 The cells were incubated in 5%BSA to block non-  
 specific protein-protein interactions for 30 min  
 at room temperature .Cells stained with Primary  
 Antibody for 30 min at room temperature. The  
 secondary antibody used for 40 min at room  
 temperature. Acquisition of 20,000 events was  
 performed.