

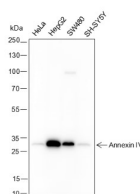
bsm-60359M**[Primary Antibody]****BioSS**
ANTIBODIES

www.bioss.com.cn

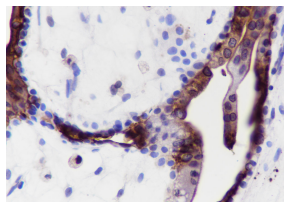
sales@bioss.com.cn

techsupport@bioss.com.cn

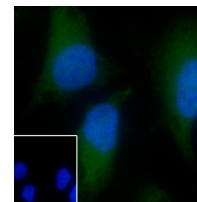
400-901-9800

Annexin IV Recombinant Mouse mAb**— DATASHEET —****Host:** Mouse**Isotype:** IgG**Clonality:** Recombinant**CloneNo.:** D4C7**GeneID:** 307**SWISS:** P09525**Target:** Annexin IV**Purification:** affinity purified by Protein A**Concentration:** 1mg/ml**Storage:** 0.01M TBS (pH7.4) with 1% BSA, 0.02% Proclin300 and 50% Glycerol.
Shipped at 4°C. Store at -20°C for one year. Avoid repeated freeze/thaw cycles.**Background:** The Annexins are a family of structurally similar proteins. Annexins bind to phospholipids and may be involved in regulation of membrane transport, membrane channel activity, and interaction of the cell membrane with the extracellular matrix. Annexin A4 (ANXA4) belongs to the annexin family of calcium dependent phospholipid binding proteins. Although their functions are still not clearly defined, several members of the annexin family have been implicated in membrane related events along exocytotic and endocytotic pathways. ANXA4 has 45 to 59% identity with other members of its family and shares a similar size and exon intron organization. Isolated from human placenta, ANXA4 encodes a protein that has possible interactions with ATP, and has in vitro anticoagulant activity and also inhibits phospholipase A2 activity. ANXA4 is almost exclusively expressed in epithelial cells.**Applications:** **WB** (1:200-1000)
IHC-P (1:20-100)
IHC-F (1:400-800)
IF (1:20-50)
ICC/IF (1:20-50)**Reactivity:** Human**Predicted MW.:** 35 kDa**Subcellular Location:** Cell membrane ,Cytoplasm ,Nucleus**— VALIDATION IMAGES —**

Blocking buffer: 5% NFDM/TBST Primary ab dilution: 1:1000 Primary ab incubation condition: 4°C overnight Lysate: HeLa, HepG2, SW480, SH-SY5Y Protein loading quantity: 20 µg Exposure time: 60 s Predicted MW: 32 kDa Observed MW: 32 kDa



Tissue: Human placenta Section type: Formalin fixed & Paraffin -embedded section Retrieval method: High temperature and high pressure Retrieval buffer: Tris/EDTA buffer, pH 9.0 Primary ab dilution: 1:100 Primary ab incubation condition: 1 hour at room temperature Counter stain: Hematoxylin Comment: Color brown is the positive signal for bsm-60359M



Cell line: HeLa Fixative: 4% Paraformaldehyde Permeabilization: 0.1% TritonX-100 Primary ab dilution: 1:50 Primary incubation condition: 4°C overnight Nuclear counter stain: DAPI (Blue) Comment: Color green is the positive signal for bsm-60359M