

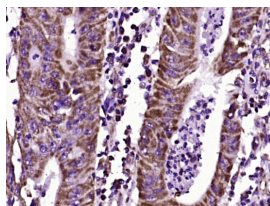
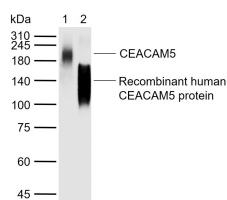
**bsm-4792M****[ Primary Antibody ]****CEA Mouse mAb****BioSS**  
**ANTIBODIES**

www.bioss.com.cn

sales@bioss.com.cn

techsupport@bioss.com.cn

400-901-9800

**— DATASHEET —****Host:** Mouse**Isotype:** IgG**Clonality:** Monoclonal**CloneNo.:** 4F3**GeneID:** 1048**SWISS:** P06731**Target:** CEA**Immunogen:** KLH conjugated synthetic peptide derived from human CEA/CD66e/CEACAM5: 41-140/702.**Purification:** affinity purified by Protein A**Concentration:** 1mg/ml**Storage:** Size : 50ul/100ul/200ul  
0.01M TBS (pH7.4) with 1% BSA, 0.02% Proclin300 and 50% Glycerol.  
Size : 200ug (PBS only)  
0.01M PBS  
Shipped at 4°C. Store at -20°C for one year. Avoid repeated freeze/thaw cycles.**Background:** CEA-related cell adhesion molecules (CEACAM) belong to the carcinoembryonic antigen (CEA) family. It consists of seven CEACAM (CEACAM 1, CEACAM 3-CEACAM 8) and 11 pregnancy-specific glyco-protein (PSG 1-PSG 11) members. The CEA family proteins belong to the immunoglobulin (Ig) superfamily and are composed of one Ig variable-like (IgV) and a varying number (0-6) of Ig constant-like (IgC) domains. CEACAM molecules are membrane-bound either via a transmembrane domain or a glycosyl phosphatidyl inositol (GPI) anchor. CEACAM molecules are differentially expressed in epithelial cells or in leucocytes. Over-expression of CEA/ CEACAM 5 in tumors of epithelial origin is the basis of its wide-spread use as a tumor marker. The function of CEACAM family members varies widely: they function as cell adhesion molecules, tumor suppressors, regulators of lymphocyte and dendritic cell activation, receptors of Neisseria species and other bacteria.**Applications:** **WB** (1:500-2000)  
**IHC-P** (1:100-500)  
**IHC-F** (1:400-800)  
**IF** (1:100-500)**Reactivity:** Human**Predicted MW.:** 150-200 kDa**Subcellular Location:** Cell membrane**— VALIDATION IMAGES —**

Sample: Lane 1: Human LOVO cell lysates Lane 2: Recombinant human CEACAM5 protein, C-His  
 Primary: Anti-CEACAM5 (bsm-4792M) at 1/1000 dilution Secondary: IRDye800CW Goat Anti-Mouse IgG at 1/20000 dilution Predicted band size: 77 kDa Observed band size: 200,140 kDa

Paraformaldehyde-fixed, paraffin embedded (human colon carcinoma); Antigen retrieval by boiling in sodium citrate buffer (pH6.0) for 15min; Block endogenous peroxidase by 3% hydrogen peroxide for 20 minutes; Blocking buffer (normal goat serum) at 37°C for 30min; Antibody incubation with (CEA) Monoclonal Antibody, Unconjugated (bsm-4792M) at 1:400 overnight at 4°C, followed by operating according to SP Kit(Mouse)(sp-0024) instructions and DAB staining.

**— SELECTED CITATIONS —**

Important Note: This product as supplied is intended for research use only, not for use in human, therapeutic or diagnostic applications.

- **[IF=5.83]** Ren, Kewei, et al. "Target-Driven Triple-Binder Assembly of MNAzyme for Amplified Electrochemical Immunosensing of Protein Biomarker." *Analytical Chemistry* (2015). Other ;. 25557949
- **[IF=5.123]** Cao Y et al. Based on ZnSe quantum dots labeling and single particle mode ICP-MS coupled with sandwich magnetic immunoassay for the detection of carcinoembryonic antigen in human serum. *Anal Chim Acta*. 2018 Oct 22;1028:22-31. Other ;Human. 29884350
- **[IF=4.244]** Xu J et al. Surface plasmon resonance sensing with adjustable sensitivity based on a flexible liquid core coupling unit. *Talanta*. 2018 Jul 1;184:468-474. Other ;Human. 29674070