

bs-7418R**[Primary Antibody]****ZDHHC20 Rabbit pAb****BioSS**
ANTIBODIES

www.bioss.com.cn

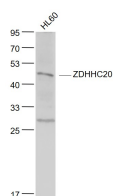
sales@bioss.com.cn

techsupport@bioss.com.cn

400-901-9800

— DATASHEET —

Host: Rabbit	Isotype: IgG	Applications: WB (1:500-2000)
Clonality: Polyclonal		Reactivity: Human (predicted: Mouse, Rat, Rabbit, Sheep, Dog, Horse)
GeneID: 253832	SWISS: Q5W0Z9	Predicted MW.: 42 kDa
Target: ZDHHC20		Subcellular Location: Cell membrane
Immunogen: KLH conjugated synthetic peptide derived from human DHHC-20: 241-365/365.		
Purification: affinity purified by Protein A		
Concentration: 1mg/ml		
Storage: 0.01M TBS (pH7.4) with 1% BSA, 0.02% Proclin300 and 50% Glycerol. Shipped at 4°C. Store at -20°C for one year. Avoid repeated freeze/thaw cycles.		
Background: Zinc-finger proteins contain DNA-binding domains and have a wide variety of functions, most of which encompass some form of transcriptional activation or repression. ZDHHC20 (zinc finger, DHHC-type containing 20) is a 365 amino acid multi-pass membrane protein that contains one DHHC-type zinc finger and is thought to function as a palmitoyltransferase, catalyzing the transformation of palmitoyl-CoA and a cysteine-conjugated protein to an S-palmitoyl protein and free CoA. In response to DNA damage, ZDHHC20, which exists as multiple alternatively spliced isoforms, may be phosphorylated by ATM or ATR. The gene encoding ZDHHC20 maps to human chromosome 13, which houses over 400 genes, such as BRCA2 and RB1, and comprises nearly 4% of the human genome.		

— VALIDATION IMAGES —

Sample: HL60(Human) Cell Lysate at 30 ug
Primary: Anti- ZDHHC20 (bs-7418R) at 1/1000
dilution Secondary: IRDye800CW Goat Anti-
Rabbit IgG at 1/20000 dilution Predicted band
size: 42 kD Observed band size: 44 kD