

bs-5932R**[Primary Antibody]****GCET1 Rabbit pAb****BioSS**
ANTIBODIES

www.bioss.com.cn

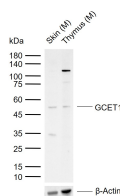
sales@bioss.com.cn

techsupport@bioss.com.cn

400-901-9800

DATASHEET

Host: Rabbit	Isotype: IgG	Applications: WB (1:500-2000)
Clonality: Polyclonal		
GeneID: 327657	SWISS: Q86WD7	
Target: GCET1		
Immunogen: KLH conjugated synthetic peptide derived from human GCET1: 301-400/417.		
Purification: affinity purified by Protein A		
Concentration: 1mg/ml		
Storage: 0.01M TBS (pH7.4) with 1% BSA, 0.02% Proclin300 and 50% Glycerol. Shipped at 4°C. Store at -20°C for one year. Avoid repeated freeze/thaw cycles.		Reactivity: Mouse (predicted: Human, Rat, Rabbit, Pig, Cow, Dog)
Background: GCET1 (germinal center B-cell expressed transcript 1) belongs to the SERPIN family of proteins and is located within a cluster of SERPIN genes on chromosome 14q32). GCET1 is a protease inhibitor that inhibits trypsin and trypsin-like serine proteases in vitro, and to a lesser extent inhibits plasmin and thrombin. This protein may play an important role in GC-B cell physiology. Its expression in lymphomas could be important in differential diagnosis and research.		Predicted MW.: 43 kDa
		Subcellular Location: Secreted ,Cytoplasm

VALIDATION IMAGES

Sample: Lane 1: Mouse Skin tissue lysates Lane 2: Mouse Thymus tissue lysates Primary: Anti-GCET1 (bs-5932R) at 1/1000 dilution Secondary: IRDye800CW Goat Anti-Rabbit IgG at 1/20000 dilution Predicted band size: 43 kDa Observed band size: 52 kDa