

bs-60224R**[Primary Antibody]****RPE65 Rabbit pAb****BioSS**
ANTIBODIES

www.bioss.com.cn

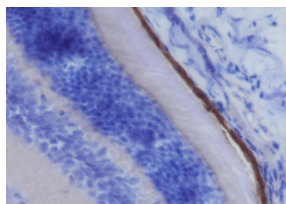
sales@bioss.com.cn

techsupport@bioss.com.cn

400-901-9800

— DATASHEET —

Host: Rabbit	Isotype: IgG	Applications: WB (1:500-2000) IHC-P (1:1000-4000) IHC-F (1:400-800) IF (1:100-500) Reactivity: Mouse Predicted MW.: 59 kDa Subcellular Location: Cell membrane ,Cytoplasm
Clonality: Polyclonal		
GeneID: 19892	SWISS: Q91ZQ5	
Target: RPE65		
Purification: affinity purified by Protein A		
Concentration: 1mg/ml		
Storage: 0.01M TBS (pH7.4) with 1% BSA, 0.02% Proclin300 and 50% Glycerol. Shipped at 4°C. Store at -20°C for one year. Avoid repeated freeze/thaw cycles.		
Background: The retinal pigment epithelium (RPE) is a monolayer simple epithelium in proximity to the outer surface of the retinal photoreceptor cells. Retinal pigment epithelium-specific protein (RPE65) is a 65 kDa protein belonging to the β -carotene dioxygenase family. This protein is important in 11-cis retinal production as well as in visual pigment regeneration. RPE65 is attached to the membrane by a lipid anchor when palmitoylated (membrane form) and soluble when unpalmitoylated. The soluble form of the protein binds vitamin A. Defects in RPE65 causes autosomal dominant retinitis pigmentosa and/or Leber congenital amaurosis type 2.		

— VALIDATION IMAGES —

Tissue: Mouse eyeball Section type: Formalin fixed & Paraffin-embedded section Retrieval method: High temperature and high pressure Retrieval buffer: Tris/EDTA buffer, pH 9.0 Primary ab dilution: 1:4000 Primary ab incubation condition: 1 hour at room temperature Counter stain: Hematoxylin Comment: Color brown is the positive signal for bsm-60224R

— SELECTED CITATIONS —

- **[IF=10.5]** Xiao-Ling Zhang, et al. A single molecule carrier for ocular posterior segment diseases. J CONTROL RELEASE. 2024 Oct; IF ;Mouse. 39490420