

bs-12304R**[Primary Antibody]****GIPC1 Rabbit pAb****BioSS**
ANTIBODIES

www.bioss.com.cn

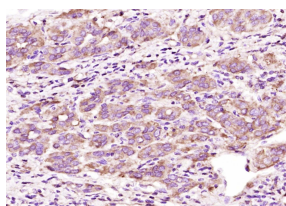
sales@bioss.com.cn

techsupport@bioss.com.cn

400-901-9800

— DATASHEET —

Host: Rabbit	Isotype: IgG	Applications: IHC-P (1:100-500) IHC-F (1:100-500) IF (1:100-500) Reactivity: Human (predicted: Mouse, Rat, Sheep, Cow, Dog) Predicted MW.: 36 kDa Subcellular Location: Cell membrane ,Cytoplasm
Clonality: Polyclonal		
GeneID: 10755	SWISS: Q14908	
Target: GIPC1		
Immunogen: KLH conjugated synthetic peptide derived from human GIPC1: 101-160/333.		
Purification: affinity purified by Protein A		
Concentration: 1mg/ml		
Storage: 0.01M TBS (pH7.4) with 1% BSA, 0.02% Proclin300 and 50% Glycerol. Shipped at 4°C. Store at -20°C for one year. Avoid repeated freeze/thaw cycles.		
Background: GIPC, for GAIP interacting protein at the C terminus (also designated SEMCAP-1 or synectin), is a PDZ domain containing protein that interacts with RGS-GAIP, a GTPase-activating protein (GAP) for G(a i) subunits. GIPC was also identified as TIP-2, a protein that interacts with the viral oncoprotein TAX, which transactivates viral and cellular promoters through interactions with various transcription factors. PDZ domain-containing proteins are primarily localized to cell-cell junctions in epithelial cells and neurons where they coordinate the assembly of multiprotein complexes. GIPC specifically localizes to clusters of vesicles near the plasma membrane and participates in G protein-coupled signaling pathway involved in regulating clathrin-coated vesicular trafficking. GIPC also associates with membrane bound semaphorin F (M-SemF), which is involved in neuronal axon growth, and it appears to regulate the subcellular distribution of M-SemF in the brain.		

— VALIDATION IMAGES —

Paraformaldehyde-fixed, paraffin embedded (human liver carcinoma); Antigen retrieval by boiling in sodium citrate buffer (pH6.0) for 15min; Block endogenous peroxidase by 3% hydrogen peroxide for 20 minutes; Blocking buffer (normal goat serum) at 37°C for 30min; Antibody incubation with (GIPC1) Polyclonal Antibody, Unconjugated (bs-12304R) at 1:400 overnight at 4°C, followed by operating according to SP Kit(Rabbit) (sp-0023) instructions and DAB staining.