

**bs-12296R****[ Primary Antibody ]****PBX1 Rabbit pAb****BioSS**  
**ANTIBODIES**

www.bioss.com.cn

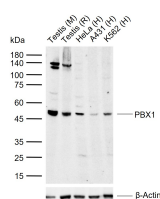
sales@bioss.com.cn

techsupport@bioss.com.cn

400-901-9800

**— DATASHEET —**

<b>Host:</b> Rabbit <b>Clonality:</b> Polyclonal <b>GeneID:</b> 5087 <b>Target:</b> PBX1 <b>Immunogen:</b> KLH conjugated synthetic peptide derived from Human PBX1: 221-340/430. <b>Purification:</b> affinity purified by Protein A <b>Concentration:</b> 1mg/ml <b>Storage:</b> 0.01M TBS (pH7.4) with 1% BSA, 0.02% Proclin300 and 50% Glycerol. Shipped at 4°C. Store at -20°C for one year. Avoid repeated freeze/thaw cycles. <b>Background:</b> Pbx 1, 2, 3 and 4 are members of the TALE (three amino acid loop extension) family of homeodomain-containing proteins. Human pre-B cell acute leukemias are frequently associated with a t(1;19)(q23;p13.3) chromosomal rearrangement, which creates a chimeric gene encoding a fusion between the E2A and Pbx 1 gene products. Pbx 2 and Pbx 3 share 92% and 94% respective identities with Pbx 1 over a 266 amino acid region flanking their homeobox domains, while all three proteins are quite divergent at their amino- and carboxy-termini. Two forms of Pbx 1 and Pbx 3 each differ primarily in their carboxy-termini and result from alternative mRNA splicing. Unlike other homeotic selector genes which are expressed transiently during development and differentiation, Pbx gene transcripts are ubiquitously expressed in both fetal and adult tissues and cell lines. Additionally, Pbx 2 and Pbx 3 transcripts are detected in lymphoid cells, which do not express Pbx 1. Pbx 4 expression is confined to the testis, especially to spermatocytes in the pachytene stage of the first meiotic prophase.	<b>Isotype:</b> IgG <b>SWISS:</b> P40424 <b>Applications:</b> WB (1:500-2000) <b>Reactivity:</b> Human, Mouse, Rat (predicted: Rabbit, Cow, Zebrafish, Chicken, Dog, Horse) <b>Predicted MW.:</b> 47 kDa <b>Subcellular Location:</b> Nucleus
---	---

**— VALIDATION IMAGES —**

Sample: Lane 1: Mouse Testis tissue lysates Lane 2: Rat Testis tissue lysates Lane 3: Human HeLa cell lysates Lane 4: Human A431 cell lysates Lane 5: Human A549 cell lysates Primary: Anti-PBX1 (bs-12296R) at 1/1000 dilution Secondary: IRDye800CW Goat Anti-Rabbit IgG at 1/20000 dilution Predicted band size: 47 kDa Observed band size: 50 kDa

**— SELECTED CITATIONS —**

- **[IF=8.025]** Ziyu Liu. et al. Exosomes from LSD1 knockdown breast cancer cells activate osteoclastogenesis and inhibit osteoblastogenesis. INT J BIOL MACROMOL. 2023 Feb;;123792 WB ;Human,Mouse. 36828097

Important Note: This product as supplied is intended for research use only, not for use in human, therapeutic or diagnostic applications.