

**bs-12292R****[ Primary Antibody ]****TCP1 alpha Rabbit pAb****BioSS**  
**ANTIBODIES**

www.bioss.com.cn

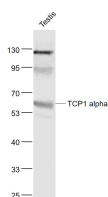
sales@bioss.com.cn

techsupport@bioss.com.cn

400-901-9800

**— DATASHEET —**

|   |                      |   |
|---|----------------------|---|
| <b>Host:</b> Rabbit   | <b>Isotype:</b> IgG  | <b>Applications:</b> WB (1:500-2000)  |
| <b>Clonality:</b> Polyclonal  |                      |   |
| <b>GeneID:</b> 6950   | <b>SWISS:</b> P17987 |   |
| <b>Target:</b> TCP1 alpha   |                      |   |
| <b>Immunogen:</b> KLH conjugated synthetic peptide derived from Human TCP1 alpha: 225-340/556.  |                      |   |
| <b>Purification:</b> affinity purified by Protein A   |                      | <b>Reactivity:</b> Mouse (predicted: Human, Rat, Rabbit, Pig, Sheep, Cow, Dog, Horse) |
| <b>Concentration:</b> 1mg/ml  |                      | <b>Predicted MW.:</b> 60 kDa  |
| <b>Storage:</b> 0.01M TBS (pH7.4) with 1% BSA, 0.02% Proclin300 and 50% Glycerol.<br>Shipped at 4°C. Store at -20°C for one year. Avoid repeated freeze/thaw cycles.  |                      | <b>Subcellular Location:</b> Cytoplasm  |
| <b>Background:</b> Molecular chaperone; assists the folding of proteins upon ATP hydrolysis. As part of the BBS/CCT complex may play a role in the assembly of BBSome, a complex involved in ciliogenesis regulating transports vesicles to the cilia. Known to play a role, in vitro, in the folding of actin and tubulin. |                      |   |

**— VALIDATION IMAGES —**

Sample: Testis (Mouse) Lysate at 40 ug Primary:

Anti- TCP1 alpha (bs-12292R) at 1/1000 dilution

Secondary: IRDye800CW Goat Anti-Rabbit IgG at

1/20000 dilution Predicted band size: 60 kD

Observed band size: 60 kD