
PMFBP1 Rabbit pAb

Catalog Number: bs-12288R

Target Protein: PMFBP1

Concentration: 1mg/ml

Form: Liquid

Host: Rabbit

Clonality: Polyclonal

Isotype: IgG

Applications: WB (1:500-2000)

Reactivity: Human (predicted:Mouse, Rat, Pig, Sheep, Cow, Dog, Horse)

Predicted MW: 119 kDa

Entrez Gene: 83449

Swiss Prot: Q8TBY8

Source: KLH conjugated synthetic peptide derived from Human PMFBP1: 201-330/1022.

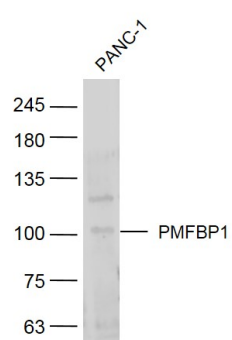
Purification: affinity purified by Protein A

Storage: 0.01M TBS (pH7.4) with 1% BSA, 0.02% Proclin300 and 50% Glycerol.

Shipped at 4°C. Store at -20°C for one year. Avoid repeated freeze/thaw cycles.

Background: PMF-1 is a 205 amino acid protein involved in kinetochore formation. Localized to the nucleus, PMF-1 contains a coiled-coil domain which interacts with the leucine-zipper domain of Nrf2. This interaction regulates the transcription of SSAT, a regulatory enzyme for polyamine catabolism. PMF-1 is also a component of the MIS12 complex, which is required for kinetochore formation and chromosomal alignment and segregation. PMF-1 is expressed at highest levels in skeletal muscle and heart, with moderate expression in liver and kidney. PMFBP1 (Polyamine-modulated factor 1-binding protein 1) is a 1022 amino acid protein that binds PMF-1 and may be involved in general organization of the cytoskeleton. Due to evidence that PMFBP1 may play a role in sperm tail morphology, it may therefore affect fertility. There are three isoforms of PMFBP1 that are produced as a result of alternative splicing events.

VALIDATION IMAGES



Sample: PANC-1(Human) Cell Lysate at 40 ug Primary: Anti-PMFBP1 (bs-12288R) at 1/300 dilution Secondary: IRDye800CW Goat Anti-Rabbit IgG at 1/20000 dilution Predicted band size: 119 kD Observed band size:119kD