

bs-12281R**[Primary Antibody]****TBX6 Rabbit pAb****BioSS**
ANTIBODIES

www.bioss.com.cn

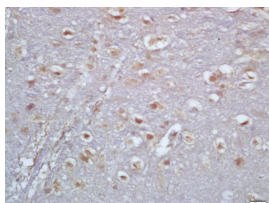
sales@bioss.com.cn

techsupport@bioss.com.cn

400-901-9800

— DATASHEET —

Host: Rabbit	Isotype: IgG	Applications: IHC-P (1:100-500)
Clonality: Polyclonal		IHC-F (1:100-500)
GeneID: 6911	SWISS: Q95947	IF (1:100-500)
Target: TBX6		
Immunogen: KLH conjugated synthetic peptide derived from Human TBX6: 241-330/436.		
Purification: affinity purified by Protein A		Reactivity: Rat (predicted: Human, Mouse, Rabbit, Cow, Dog, Horse)
Concentration: 1mg/ml		
Storage: 0.01M TBS (pH7.4) with 1% BSA, 0.02% Proclin300 and 50% Glycerol. Shipped at 4°C. Store at -20°C for one year. Avoid repeated freeze/thaw cycles.		Predicted MW.: 47 kDa
Background: Members of the T-box (Tbx) gene family share a conserved domain that codes for the T-box, a sequence involved in DNA-binding and protein dimerization. The Tbx gene family is largely conserved throughout metazoan evolution, and is implicated in a variety of developmental processes ranging from the formation of germ layers to the organizational patterning of the central nervous system. In the mouse, Tbx6 is involved in both the specification and patterning of the somites along the entire length of the embryo. Specifically, Tbx6 is expressed in the primitive streak, tail bud, and presomitic mesoderm and is essential for the specification of posterior paraxial mesoderm. In the absence of Tbx6, posterior somites are replaced by ectopic neural tubes.		Subcellular Location: Nucleus

— VALIDATION IMAGES —

Tissue/cell: rat brain tissue; 4% Paraformaldehyde-fixed and paraffin-embedded; Antigen retrieval: citrate buffer (0.01M, pH 6.0), Boiling bathing for 15min; Block endogenous peroxidase by 3% Hydrogen peroxide for 30min; Blocking buffer (normal goat serum, C-0005) at 37°C for 20 min; Incubation: Anti-TBX6 Polyclonal Antibody, Unconjugated(bs-12281R) 1:200, overnight at 4°C, followed by conjugation to the secondary antibody(SP-0023) and DAB(C-0010) staining