

bs-25526R**[Primary Antibody]**

Ninjurin 1 Rabbit pAb

Bioss
ANTIBODIES

www.bioss.com.cn

sales@bioss.com.cn

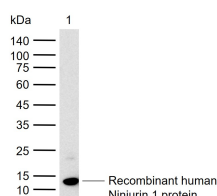
techsupport@bioss.com.cn

400-901-9800

— DATASHEET —

Host: Rabbit	Isotype: IgG	Applications: WB (1:500-2000)
Clonality: Polyclonal		Reactivity: Human, Mouse, Rat (predicted: Pig)
GeneID: 4814	SWISS: Q92982	
Target: Ninjurin 1		Predicted MW.: 16 kDa
Immunogen: KLH conjugated synthetic peptide derived from human Ninjurin 1: 1-100/152.		Subcellular Location: Cell membrane
Purification: affinity purified by Protein A		
Concentration: 1mg/ml		
Storage: 0.01M TBS (pH7.4) with 1% BSA, 0.02% Proclin300 and 50% Glycerol. Shipped at 4°C. Store at -20°C for one year. Avoid repeated freeze/thaw cycles.		
Background: Ninjurin family proteins are multi-pass membrane proteins induced by nerve injury in Schwann cells and dorsal root ganglion neurons. Ninjurin proteins act as homophilic cell adhesion molecules that promote axonal growth. Ninjurin proteins also play a role in the formation and function of other tissues. Ninjurin-1 is widely expressed in adult and embryonic tissues, particularly those with epithelial origin. Ninjurin-2 is also widely expressed, with highest levels in adult bone marrow and peripheral blood lymphocytes and embryo liver, thymus and heart. The genes that encode the Ninjurin proteins map to a region known to cause several genetic disorders, including hereditary sensory neuropathy type I and type II (HSN1 and HSN2). However, no link between mutations in the genes encoding Ninjurins and the diseases have been found.		

— VALIDATION IMAGES —



Sample: Lane 1: Recombinant human Ninjurin 1 protein, C-His(bs-42081P) Primary: Anti-Ninjurin 1 (bs-25526R) at 1/1000 dilution Secondary: IRDye800CW Goat Anti-Rabbit IgG at 1/20000 dilution Predicted band size: 16 kDa Observed band size: 12 kDa