

bs-25523R**[Primary Antibody]****SLC44A1 Rabbit pAb****BioSS**
ANTIBODIES

www.bioss.com.cn

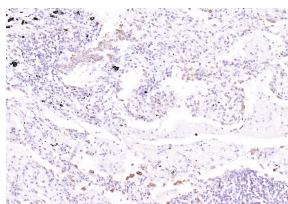
sales@bioss.com.cn

techsupport@bioss.com.cn

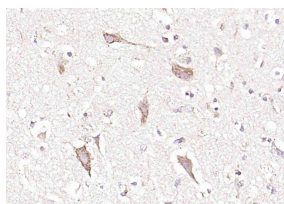
400-901-9800

— DATASHEET —

Host: Rabbit	Isotype: IgG	Applications: IHC-P (1:100-500) IHC-F (1:400-800) IF (1:100-500) Reactivity: Human, Rat (predicted: Mouse, Pig, Sheep, Cow, Dog, Horse) Predicted MW.: 73 kDa Subcellular Location: Cell membrane ,Cytoplasm
Clonality: Polyclonal		
GeneID: 23446	SWISS: Q8WWI5	
Target: SLC44A1		
Immunogen: KLH conjugated synthetic peptide derived from human SLC44A1 : 581-657/657.		
Purification: affinity purified by Protein A		
Concentration: 1mg/ml		
Storage: 0.01M TBS (pH7.4) with 1% BSA, 0.02% Proclin300 and 50% Glycerol. Shipped at 4°C. Store at -20°C for one year. Avoid repeated freeze/thaw cycles.		
Background: SLC44A1 (Solute carrier family 44, member 1) is an intermediate- affinity, Na ⁺ -independent choline transporter. It is thought to be important for the production of the membrane lipid phosphatidylcholine. Hence, it may have a role in membrane synthesis and myelin production.		

— VALIDATION IMAGES —

Paraformaldehyde-fixed, paraffin embedded (human lung carcinoma); Antigen retrieval by boiling in sodium citrate buffer (pH6.0) for 15min; Block endogenous peroxidase by 3% hydrogen peroxide for 20 minutes; Blocking buffer (normal goat serum) at 37°C for 30min; Antibody incubation with (SLC44A1) Polyclonal Antibody, Unconjugated (bs-25523R) at 1:100 overnight at 4°C, followed by operating according to SP Kit(Rabbit) (sp-0023) instructionsand DAB staining.



Paraformaldehyde-fixed, paraffin embedded (human brain); Antigen retrieval by boiling in sodium citrate buffer (pH6.0) for 15min; Block endogenous peroxidase by 3% hydrogen peroxide for 20 minutes; Blocking buffer (normal goat serum) at 37°C for 30min; Antibody incubation with (SLC44A1) Polyclonal Antibody, Unconjugated (bs-25523R) at 1:100 overnight at 4°C, followed by operating according to SP Kit(Rabbit) (sp-0023) instructionsand DAB staining.