
NANOS1 Rabbit pAb

Catalog Number: bs-12272R

Target Protein: NANOS1

Concentration: 1mg/ml

Form: Liquid

Host: Rabbit

Clonality: Polyclonal

Isotype: IgG

Applications: WB (1:500-2000)

Reactivity: Human (predicted: Mouse, Rat, Pig, Sheep, Cow, Chicken, Dog)

Predicted MW: 30 kDa

Entrez Gene: 340719

Swiss Prot: Q8WY41

Source: KLH conjugated synthetic peptide derived from Human NANOS1: 221-330/292.

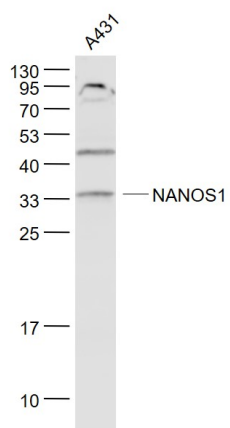
Purification: affinity purified by Protein A

Storage: 0.01M TBS (pH7.4) with 1% BSA, 0.02% Proclin300 and 50% Glycerol.

Shipped at 4°C. Store at -20°C for one year. Avoid repeated freeze/thaw cycles.

Background: Nanos1 is a 292 amino acid protein that localizes to the perinuclear region of the cytoplasm and contains one nanos-type zinc finger. Expressed at high levels in spermatogonia and present at lower levels in fetal ovaries, Nanos1 forms a complex with Pumilio 2 and functions to regulate the translation of select mRNAs, specifically via association with the 3' -UTR of its mRNA targets. Additionally, Nanos1 is required for the establishment and maintenance of germline stem cells, as it prevents their premature entry into oogenesis. The gene encoding Nanos1 maps to human chromosome 10, which houses over 1,200 genes and comprises nearly 4.5% of the human genome. Defects in some of the genes that map to chromosome 10 are associated with Charcot-Marie Tooth disease, Jackson-Weiss syndrome, Usher syndrome, nonsyndromic deafness, Wolman's syndrome, Cowden syndrome, multiple endocrine neoplasia type 2 and porphyria.

VALIDATION IMAGES



Sample: A431(Human) Cell Lysate at 30 ug Primary: Anti- NANOS1 (bs-12272R) at 1/1000 dilution Secondary: IRDye800CW Goat Anti-Rabbit IgG at 1/20000 dilution Predicted band size: 30 kD Observed band size: 33 kD