

**bsm-60236R****[ Primary Antibody ]****BioSS**  
ANTIBODIES

www.bioss.com.cn

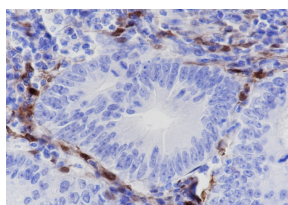
sales@bioss.com.cn

techsupport@bioss.com.cn

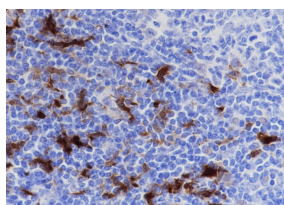
400-901-9800

**IDO1 Recombinant Rabbit mAb****— DATASHEET —**

<b>Host:</b> Rabbit	<b>Isotype:</b> IgG	<b>Applications:</b> IHC-P (1:200-1:1000) IHC-F (1:50-100) IF (1:50-100)  <b>Reactivity:</b> Human    <b>Predicted MW.:</b> 45 kDa  <b>Subcellular Location:</b> Cytoplasm
<b>Clonality:</b> Recombinant	<b>CloneNo.:</b> ID2C1	
<b>GeneID:</b> 3620	<b>SWISS:</b> P14902	
<b>Target:</b> IDO1		
<b>Purification:</b> affinity purified by Protein A		
<b>Concentration:</b> 1mg/ml		
<b>Storage:</b> 0.01M TBS (pH7.4) with 1% BSA, 0.02% Proclin300 and 50% Glycerol. Shipped at 4°C. Store at -20°C for one year. Avoid repeated freeze/thaw cycles.		
<b>Background:</b> This gene encodes indoleamine 2,3-dioxygenase (IDO) - a heme enzyme that catalyzes the first and rate-limiting step in tryptophan catabolism to N-formyl-kynurenine. This enzyme acts on multiple tryptophan substrates including D-tryptophan, L-tryptophan, 5-hydroxy-tryptophan, tryptamine, and serotonin. This enzyme is thought to play a role in a variety of pathophysiological processes such as antimicrobial and antitumor defense, neuropathology, immunoregulation, and antioxidant activity. Through its expression in dendritic cells, monocytes, and macrophages this enzyme modulates T-cell behavior by its peri-cellular catabolization of the essential amino acid tryptophan.[provided by RefSeq, Feb 2011]		

**— VALIDATION IMAGES —**

Tissue: Human colon cancer Section type: Formalin fixed & Paraffin -embedded section  
Retrieval method: High temperature and high pressure  
Retrieval buffer: Tris/EDTA buffer, pH 9.0  
Primary ab dilution: 1:1000  
Primary ab incubation condition: 1 hour at room temperature  
Counter stain: Hematoxylin  
Comment: Color brown is the positive signal for bsm-60236R



Tissue: Human tonsil Section type: Formalin fixed & Paraffin -embedded section  
Retrieval method: High temperature and high pressure  
Retrieval buffer: Tris/EDTA buffer, pH 9.0  
Primary ab dilution: 1:1000  
Primary ab incubation condition: 1 hour at room temperature  
Counter stain: Hematoxylin  
Comment: Color brown is the positive signal for bsm-60236R