

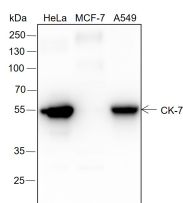
bsm-60305R**[Primary Antibody]****BioSS**
ANTIBODIES

www.bioss.com.cn

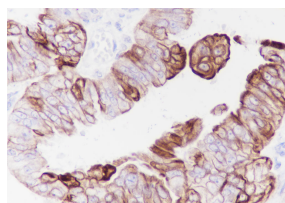
sales@bioss.com.cn

techsupport@bioss.com.cn

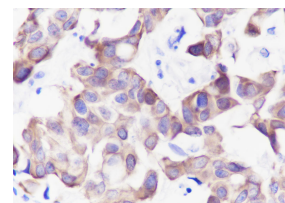
400-901-9800

CK-7 Recombinant Rabbit mAb**— DATASHEET —****Host:** Rabbit**Isotype:** IgG**Clonality:** Recombinant**CloneNo.:** C2G6**GeneID:** 3855**SWISS:** P08729**Target:** CK-7**Purification:** affinity purified by Protein A**Concentration:** 1mg/ml**Storage:** 0.01M TBS (pH7.4) with 1% BSA, 0.02% Proclin300 and 50% Glycerol.
Shipped at 4°C. Store at -20°C for one year. Avoid repeated freeze/thaw cycles.**Background:** The protein encoded by this gene is a member of the keratin gene family. The type II cytokeratins consist of basic or neutral proteins which are arranged in pairs of heterotypic keratin chains coexpressed during differentiation of simple and stratified epithelial tissues. This type II cytokeratin is specifically expressed in the simple epithelia lining the cavities of the internal organs and in the gland ducts and blood vessels. The genes encoding the type II cytokeratins are clustered in a region of chromosome 12q12-q13. Alternative splicing may result in several transcript variants; however, not all variants have been fully described. [provided by RefSeq, Jul 2008]**Applications:** **WB** (1:500-2000)
IHC-P (1:200-1:1000)
IHC-F (1:50-100)
IF (1:50-100)
ICC/IF (1:50)**Reactivity:** Human**Predicted MW.:** 54 kDa**Subcellular Location:** Cytoplasm**— VALIDATION IMAGES —**

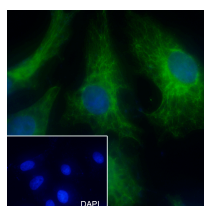
Blocking buffer: 5% NFD/MTBST Primary ab dilution: 1:2000 Primary ab incubation condition: 2 hours at room temperature Lysate: HeLa, MCF-7, A549 Protein loading quantity: 20 µg Exposure time: 10 s Predicted MW: 51 kDa Observed MW: 50 kDa



Tissue: Human ovarian carcinoma Section type: Formalin fixed & Paraffin -embedded section Retrieval method: High temperature and high pressure Retrieval buffer: Tris/EDTA buffer, pH 9.0 Primary ab dilution: 1:1000 Primary incubation condition: 1 hour at room temperature Counter stain: Hematoxylin Comment: Color brown is the positive signal for bsm-60305R



Tissue: Human breast cancer Section type: Formalin fixed & Paraffin -embedded section Retrieval method: High temperature and high pressure Retrieval buffer: Tris/EDTA buffer, pH 9.0 Primary ab dilution: 1:1000 Primary ab incubation condition: 1 hour at room temperature Counter stain: Hematoxylin Comment: Color brown is the positive signal for bsm-60305R



Cell line: HeLa Fixative: 4% Paraformaldehyde Permeabilization: 0.1% TritonX-100 Primary ab dilution: 1:50 Primary incubation condition: 4°C overnight Nuclear counter stain: DAPI (Blue) Comment: Color green is the positive signal for bsm-60305R

Important Note: This product as supplied is intended for research use only, not for use in human, therapeutic or diagnostic applications.