

## phospho-CXCR4 (Ser339) Rabbit pAb

Catalog Number: bs-12256R

Target Protein: phospho-CXCR4 (Ser339)

Concentration: 1mg/ml

Form: Liquid

Host: Rabbit

Clonality: Polyclonal

Isotype: IgG

Applications: WB (1:500-2000), Flow-Cyt (1µg/Test)

Reactivity: Mouse (predicted:Human, Rat, Rabbit, Cow, Dog, Horse)

Predicted MW: 40 kDa

Entrez Gene: 7852

Swiss Prot: P61073

Source: KLH conjugated Synthesised phosphopeptide derived from human CXCR4 around the phosphorylation site of Ser339: HS(p-S)VS.

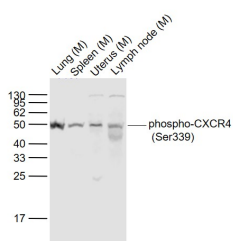
Purification: affinity purified by Protein A

Storage: 0.01M TBS (pH7.4) with 1% BSA, 0.02% Proclin300 and 50% Glycerol.

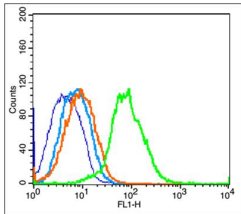
Shipped at 4°C. Store at -20°C for one year. Avoid repeated freeze/thaw cycles.

**Background:** This gene encodes a CXC chemokine receptor specific for stromal cell-derived factor-1. The protein has 7 transmembrane regions and is located on the cell surface. It acts with the CD4 protein to support HIV entry into cells and is also highly expressed in breast cancer cells. Mutations in this gene have been associated with WHIM (warts, hypogammaglobulinemia, infections, and myelokathexis) syndrome. Alternate transcriptional splice variants, encoding different isoforms, have been characterized. Monomer. Can form dimers.

### VALIDATION IMAGES



Sample: Lane 1: Lung (Mouse) Lysate at 40 ug Lane 2: Spleen (Mouse) Lysate at 40 ug Lane 3: Uterus (Mouse) Lysate at 40 ug Lane 4: Lymph node (Mouse) Lysate at 40 ug Primary: Anti-phospho-CXCR4 (Ser339) (bs-12256R) at 1/1000 dilution Secondary: IRDye800CW Goat Anti-Rabbit IgG at 1/20000 dilution Predicted band size: 45 kD Observed band size: 50 kD



Blank control(mouse):Mouse Spleen Cells (fixed with 2% paraformaldehyde for 10 min at 37°C). Primary Antibody:Rabbit Anti-phospho-CXCR4 (Ser339) antibody (bs-12256R,Green); Dilution: 1µg in 100 µL 1X PBS containing 0.5% BSA; Isotype Control Antibody: Rabbit IgG(orange) ,used under the same conditions; Secondary Antibody: Goat anti-rabbit IgG-FITC(white blue), Dilution: 1:200 in 1 X PBS containing 0.5% BSA.

## PRODUCT SPECIFIC PUBLICATIONS

---

[IF=1.149] Fenlong Xue. et al. Construction and a preliminary study of paracrine effect of bone marrow-derived endothelial progenitor cell sheet. 2021 May 30 WB ; Rat . 34052984