

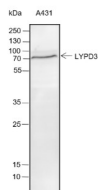
bsm-60286R**[Primary Antibody]****BioSS**
ANTIBODIES

www.bioss.com.cn

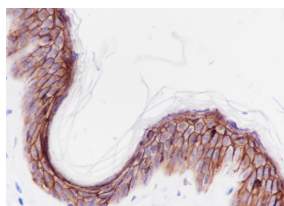
sales@bioss.com.cn

techsupport@bioss.com.cn

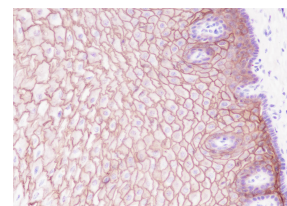
400-901-9800

LYPD3 Recombinant Rabbit mAb**DATASHEET****Host:** Rabbit**Isotype:** IgG**Clonality:** Recombinant**CloneNo.:** C4F10**GeneID:** 27076**SWISS:** O95274**Target:** LYPD3**Purification:** affinity purified by Protein A**Concentration:** 1mg/ml**Storage:** 0.01M TBS (pH7.4) with 1% BSA, 0.02% Proclin300 and 50% Glycerol.
Shipped at 4°C. Store at -20°C for one year. Avoid repeated freeze/thaw cycles.**Background:** Predicted to enable laminin binding activity. Predicted to act upstream of or within cell-matrix adhesion. Located in extracellular space. [provided by Alliance of Genome Resources, Nov 2021]**Applications:** **WB** (1:500-1000)
IHC-P (1:100-500)
IHC-F (1:50-100)
IF (1:20-100)
ICC/IF (1:20-50)**Reactivity:** Human**Predicted MW.:** 33 kDa**Subcellular Location:** Cell membrane**VALIDATION IMAGES**

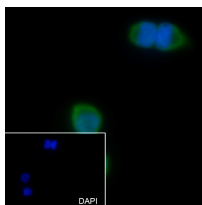
Blocking buffer: 5% NFDm/TBST Primary ab dilution: 1:2000 Primary ab incubation condition: 2 hours at room temperature Lysate: A431 Protein loading quantity: 20 µg Exposure time: 30 s Predicted MW: 36 kDa Observed MW: 70 kDa



Tissue: Human skin Section type: Formalin fixed & Paraffin -embedded section Retrieval method: High temperature and high pressure Retrieval buffer: Tris/EDTA buffer, pH 9.0 Primary ab dilution: 1:1000 Primary ab incubation condition: 1 hour at room temperature Counter stain: Hematoxylin Comment: Color brown is the positive signal for bsm-60286R



Tissue: Human esophagus Section type: Formalin fixed & Paraffin -embedded section Retrieval method: High temperature and high pressure Retrieval buffer: Tris/EDTA buffer, pH 9.0 Primary ab dilution: 1:1000 Primary ab incubation condition: 1 hour at room temperature Counter stain: Hematoxylin Comment: Color brown is the positive signal for bsm-60286R



Cell line: A431 Fixative: 4% Paraformaldehyde Permeabilization: 0.1% TritonX-100 Primary ab dilution: 1:50 Primary incubation condition: 4°C overnight Secondary ab: Goat Anti-Rabbit IgG Nuclear counter stain: DAPI (Blue) Comment: Color green is the positive signal for bsm-60286R