

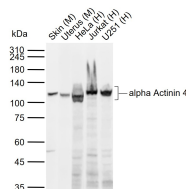
bsm-60423R**[Primary Antibody]****alpha Actinin 4 Recombinant Rabbit mAb****BioSS**
ANTIBODIES

www.bioss.com.cn

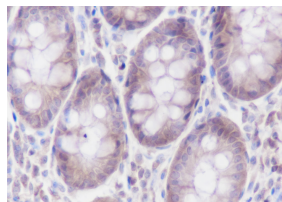
sales@bioss.com.cn

techsupport@bioss.com.cn

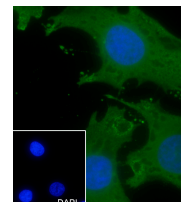
400-901-9800

— DATASHEET —**Host:** Rabbit**Isotype:** IgG**Clonality:** Recombinant**CloneNo.:** A12H9**GeneID:** 81**SWISS:** O43707**Target:** alpha Actinin 4**Purification:** affinity purified by Protein A**Concentration:** 1mg/ml**Storage:** 0.01M TBS (pH7.4) with 1% BSA, 0.02% Proclin300 and 50% Glycerol.
Shipped at 4°C. Store at -20°C for one year. Avoid repeated freeze/thaw cycles.**Background:** Alpha actinins belong to the spectrin gene superfamily which represents a diverse group of cytoskeletal proteins, including the alpha and beta spectrins and dystrophins. Alpha actinin is an actin-binding protein with multiple roles in different cell types. In nonmuscle cells, the cytoskeletal isoform is found along microfilament bundles and adherens-type junctions, where it is involved in binding actin to the membrane. In contrast, skeletal, cardiac, and smooth muscle isoforms are localized to the Z-disc and analogous dense bodies, where they help anchor the myofibrillar actin filaments. This gene encodes a nonmuscle, alpha actinin isoform which is concentrated in the cytoplasm, and thought to be involved in metastatic processes. Mutations in this gene have been associated with focal and segmental glomerulosclerosis. [provided by RefSeq, Jul 2008].**Applications:** WB (1:200-1000)**IHC-P** (1:20-1:100)**IHC-F** (1:400-800)**IF** (1:20-1:100)**ICC/IF** (1:20-1:100)**Reactivity:** Human, Mouse**Predicted
MW.:** 105 kDa**Subcellular
Location:** Cytoplasm ,Nucleus**— VALIDATION IMAGES —**

Sample: Lane 1: Mouse Skin tissue lysates Lane 2: Mouse Uterus tissue lysates Lane 3: Human HeLa cell lysates Lane 4: Human Jurkat cell lysates Lane 5: Human U251 cell lysates Primary: Anti-alpha Actinin 4 (bsm-60423R) at 1/1000 dilution Secondary: IRDye800CW Goat Anti-Rabbit IgG at 1/20000 dilution Predicted band size: 105 kDa Observed band size: 108 kDa



Tissue: Human colon Section type: Formalin fixed & Paraffin -embedded section Retrieval method: High temperature and high pressure Retrieval buffer: Tris/EDTA buffer, pH 9.0 Primary ab dilution: 1:100 Primary ab incubation condition: 1 hour at room temperature Secondary ab: SP Kit(Rabbit) (sp-0023) Counter stain: Hematoxylin (Blue) Comment: Color brown is the positive signal for bsm-60423R



Cell line: HeLa Fixative: 4% Paraformaldehyde Permeabilization: 0.1% TritonX-100 Primary ab dilution: 1:50 Primary incubation condition: 4°C overnight Secondary ab: Goat Anti-Rabbit IgG Nuclear counter stain: DAPI (Blue) Comment: Color green is the positive signal for bsm-60423R

— SELECTED CITATIONS —

- **[IF=4.7]** Qianru Chi. et al. In vitro and in silico analyses reveal the toxicity of metolachlor to grass carp hepatocytes and the antagonism of melatonin. PESTIC BIOCHEM PHYS. 2024 Apr;;105930 WB ;Fish. 10.1016/j.pestbp.2024.105930