

**bsm-60753M****[ Primary Antibody ]****BioSS**  
ANTIBODIES

www.bioss.com.cn

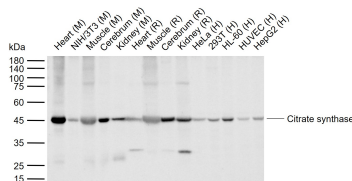
sales@bioss.com.cn

techsupport@bioss.com.cn

400-901-9800

**Citrate synthase Mouse mAb****— DATASHEET —**

<b>Host:</b> Mouse	<b>Isotype:</b> IgG	<b>Applications:</b> <b>WB</b> (1:500-1000) <b>IHC-P</b> (1:100-500) <b>IHC-F</b> (1:400-800) <b>IF</b> (1:50) <b>ICC/IF</b> (1:50)
<b>Clonality:</b> Monoclonal	<b>CloneNo.:</b> C9H4	
<b>GeneID:</b> 1431	<b>SWISS:</b> O75390	
<b>Target:</b> Citrate synthase		
<b>Purification:</b> affinity purified by Protein A		
<b>Concentration:</b> 1mg/ml		<b>Reactivity:</b> Human, Mouse, Rat
<b>Storage:</b> PBS, Glycerol, BSA. Shipped at 4°C. Store at -20°C for one year. Avoid repeated freeze/thaw cycles.		
<b>Background:</b> The protein encoded by this gene is a Krebs tricarboxylic acid cycle enzyme that catalyzes the synthesis of citrate from oxaloacetate and acetyl coenzyme A. The enzyme is found in nearly all cells capable of oxidative metabolism. This protein is nuclear encoded and transported into the mitochondrial matrix, where the mature form is found. [provided by RefSeq, Jul 2008]		
		<b>Predicted MW.:</b> 52 kDa  <b>Subcellular Location:</b> Cytoplasm

**— VALIDATION IMAGES —**

Sample: Lane 1: Mouse Heart tissue lysates Lane 2: Mouse NIH/3T3 cell lysates Lane 3: Mouse Muscle tissue lysates Lane 4: Mouse Cerebrum tissue lysates Lane 5: Mouse Kidney tissue lysates Lane 6: Rat Heart tissue lysates Lane 7: Rat Muscle tissue lysates Lane 8: Rat Cerebrum tissue lysates Lane 9: Rat Kidney tissue lysates Lane 10: Human HeLa cell lysates Lane 11: Human 293T cell lysates Lane 12: Human HL-60 cell lysates Lane 13: Human HUVEC cell lysates Lane 14: Human HepG2 cell lysates Primary: Anti-Citrate synthase (bsm-60753M) at 1/1000 dilution Secondary: IRDye800CW Goat Anti-Mouse IgG at 1/20000 dilution Predicted band size: 52 kDa Observed band size: 45 kDa