

bsm-60308M**[Primary Antibody]****BioSS**
ANTIBODIES

www.bioss.com.cn

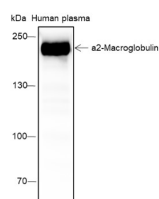
sales@bioss.com.cn

techsupport@bioss.com.cn

400-901-9800

Alpha 2 Macroglobulin Recombinant Mouse mAb**— DATASHEET —**

Host: Mouse	Isotype: IgG2a, Kappa	Applications: WB (1:500-2000)
Clonality: Recombinant		Reactivity: Human
GeneID: 2	SWISS: P01023	
Target: Alpha 2 Macroglobulin		
Purification: affinity purified by Protein G		Predicted MW.: 160 kDa
Concentration: 1mg/ml		Subcellular Location: Secreted ,Cytoplasm
Storage: 0.01M TBS (pH7.4) with 1% BSA, 0.02% Proclin300 and 50% Glycerol. Shipped at 4°C. Store at -20°C for one year. Avoid repeated freeze/thaw cycles.		
Background: Alpha-2-macroglobulin is a protease inhibitor and cytokine transporter. It inhibits many proteases, including trypsin, thrombin and collagenase. A2M is implicated in Alzheimer disease (AD) due to its ability to mediate the clearance and degradation of A-beta, the major component of beta-amyloid deposits. [provided by RefSeq, Jul 2008].		

— VALIDATION IMAGES —

Blocking buffer: 5% NFDm/TBST Primary ab
dilution: 1:1000 Primary ab incubation
condition: 2 hours at room temperature Lysate:
Human plasma Protein loading quantity: 20 µg
Exposure time: 3 s Predicted MW: 163 kDa
Observed MW: 163 kDa