

**bsm-60449M****[ Primary Antibody ]****Bioss**  
ANTIBODIES

www.bioss.com.cn

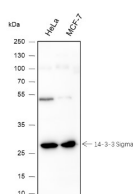
sales@bioss.com.cn

techsupport@bioss.com.cn

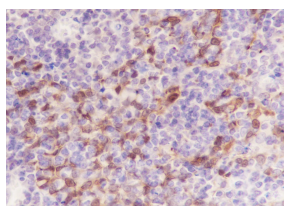
400-901-9800

**14-3-3 sigma Recombinant Mouse mAb****— DATASHEET —**

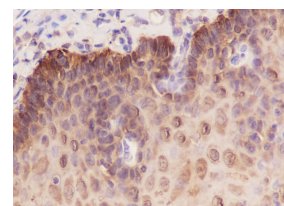
<b>Host:</b> Mouse	<b>Isotype:</b> IgG1, Kappa	<b>Applications:</b> WB (1:500-2000) <b>IHC-P</b> (1:50-1:100) <b>IHC-F</b> (1:400-800) <b>IF</b> (1:100-500)  <b>Reactivity:</b> Human   <b>Predicted MW.:</b> 28 kDa  <b>Subcellular Location:</b> Secreted ,Cytoplasm
<b>Clonality:</b> Recombinant		
<b>GeneID:</b> 2810	<b>SWISS:</b> P31947	
<b>Target:</b> 14-3-3 sigma		
<b>Purification:</b> affinity purified by Protein G		
<b>Concentration:</b> 1mg/ml		
<b>Storage:</b> 0.01M TBS (pH7.4) with 1% BSA, 0.02% Proclin300 and 50% Glycerol. Shipped at 4°C. Store at -20°C for one year. Avoid repeated freeze/thaw cycles.		
<b>Background:</b> This gene encodes a cell cycle checkpoint protein. The encoded protein binds to translation and initiation factors and functions as a regulator of mitotic translation. In response to DNA damage this protein plays a role in preventing DNA errors during mitosis. [provided by RefSeq, Aug 2017]		

**— VALIDATION IMAGES —**

Blocking buffer: 5% NFDM/TBST Primary ab dilution: 1:1000 Primary ab incubation condition: room temperature 2h Secondary ab: Goat Anti-Mouse IgG H&L (HRP) Lysate: HeLa, MCF-7 Protein loading quantity: 20 µg Exposure time: 60 s Predicted MW: 28 kDa Observed MW: 28 kDa



Tissue: Human tonsil Section type: Formalin fixed & Paraffin-embedded section Retrieval method: High temperature and high pressure Retrieval buffer: Tris/EDTA buffer, pH 9.0 Primary ab dilution: 1:100 Primary ab incubation condition: 1 hour at room temperature Secondary ab: SP Kit(Mouse)(sp-0024) Counter stain: Hematoxylin (Blue) Comment: Color brown is the positive signal for bsm-60449M



Tissue: Human esophagus Section type: Formalin fixed & Paraffin-embedded section Retrieval method: High temperature and high pressure Retrieval buffer: Tris/EDTA buffer, pH 9.0 Primary ab dilution: 1:100 Primary ab incubation condition: 1 hour at room temperature Secondary ab: SP Kit(Mouse)(sp-0024) Counter stain: Hematoxylin (Blue) Comment: Color brown is the positive signal for bsm-60449M