

bsm-60270M**[Primary Antibody]****BioSS**
ANTIBODIES

www.bioss.com.cn

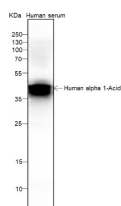
sales@bioss.com.cn

techsupport@bioss.com.cn

400-901-9800

Alpha-1-acid glycoprotein 1 Recombinant Mouse mAb**— DATASHEET —**

Host: Mouse	Isotype: IgG2a, Kappa	Applications: WB (1:500-2000)
Clonality: Recombinant		Reactivity: Human
GeneID: 5004	SWISS: P02763	
Target: Alpha-1-acid glycoprotein 1		
Purification: affinity purified by Protein G		Predicted MW.: 22 kDa
Concentration: 1mg/ml		Subcellular Location: Secreted
Storage: 0.01M TBS (pH7.4) with 1% BSA, 0.02% Proclin300 and 50% Glycerol. Shipped at 4°C. Store at -20°C for one year. Avoid repeated freeze/thaw cycles.		
Background: This gene encodes a key acute phase plasma protein. Because of its increase due to acute inflammation, this protein is classified as an acute-phase reactant. The specific function of this protein has not yet been determined; however, it may be involved in aspects of immunosuppression. [provided by RefSeq, Jul 2008]		

— VALIDATION IMAGES —

Blocking buffer: 5% NFDM/TBST Primary ab
dilution: 1:1000 Primary ab incubation
condition: 2 hours at room temperature Lysate:
Human serum Protein loading quantity: 20 µg
Exposure time: 60 s Predicted MW: 24 kDa
Observed MW: 45 kDa