

CNPase Recombinant Mouse mAb

Catalog Number: bsm-60368M

Target Protein: CNPase

Concentration: 1mg/ml

Form: Liquid

Host: Mouse

Clonality: Recombinant

Isotype: IgG1/Kappa

Applications: WB (1:200-1000), IHC-P (1:100-500), IHC-F (1:100-500), IF (1:100-500), ICC/IF (1:20-50)

Reactivity: Human, Rat

Predicted MW: 48 kDa

Subcellular: Cytoplasm

Locations:

Entrez Gene: 1267

Swiss Prot: P09543

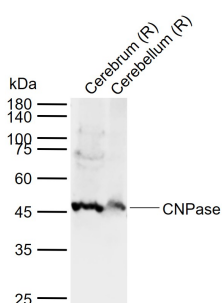
Purification: affinity purified by Protein G

Storage: 0.01M TBS (pH7.4) with 1% BSA, 0.02% Proclin300 and 50% Glycerol.

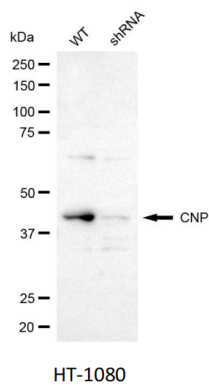
Shipped at 4°C. Store at -20°C for one year. Avoid repeated freeze/thaw cycles.

Background: Predicted to enable 2',3'-cyclic-nucleotide 3'-phosphodiesterase activity. Involved in substantia nigra development. Located in several cellular components, including extracellular space; microtubule; and plasma membrane. Implicated in hypomyelinating leukodystrophy 20; multiple sclerosis; and schizophrenia. Biomarker of alcoholic liver cirrhosis; multiple sclerosis; and restless legs syndrome. [provided by Alliance of Genome Resources, Nov 2021]

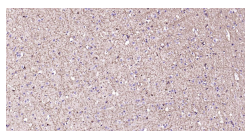
VALIDATION IMAGES



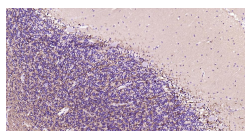
Sample: Lane 1: Rat Cerebrum tissue lysates Lane 2: Rat Cerebellum tissue lysates Primary: Anti-CNPase (bsm-60368M) at 1/1000 dilution Secondary: IRDye800CW Goat Anti-Mouse IgG at 1/20000 dilution Predicted band size: 48 kDa Observed band size: 46 kDa



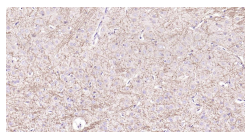
25 ug total protein per lane of various lysates (see on figure) probed with CNPase monoclonal antibody, unconjugated (bsm-60368M) at 1:5000 dilution and 4°C overnight incubation. Followed by conjugated secondary antibody incubation at r.t. for 60 min.



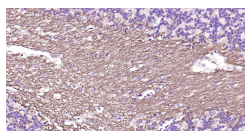
Paraformaldehyde-fixed, paraffin embedded Human Cerebrum; Antigen retrieval by boiling in sodium citrate buffer (pH6.0) for 15 min; Antibody incubation with CNPase Monoclonal Antibody, Unconjugated(bsm-60368M) at 1:200 overnight at 4°C, followed by conjugation to the bs-40296G-HRP and DAB (C-0010) staining.



Paraformaldehyde-fixed, paraffin embedded Human Cerebellum; Antigen retrieval by boiling in sodium citrate buffer (pH6.0) for 15 min; Antibody incubation with CNPase Monoclonal Antibody, Unconjugated(bsm-60368M) at 1:200 overnight at 4°C, followed by conjugation to the bs-40296G-HRP and DAB (C-0010) staining.



Paraformaldehyde-fixed, paraffin embedded Rat Cerebrum; Antigen retrieval by boiling in sodium citrate buffer (pH6.0) for 15 min; Antibody incubation with CNPase Monoclonal Antibody, Unconjugated(bsm-60368M) at 1:200 overnight at 4°C, followed by conjugation to the bs-40296G-HRP and DAB (C-0010) staining.



Paraformaldehyde-fixed, paraffin embedded Rat Cerebellum; Antigen retrieval by boiling in sodium citrate buffer (pH6.0) for 15 min; Antibody incubation with CNPase Monoclonal Antibody, Unconjugated(bsm-60368M) at 1:200 overnight at 4°C, followed by conjugation to the bs-40296G-HRP and DAB (C-0010) staining.