

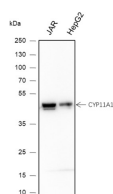
bsm-60352M**[Primary Antibody]****BioSS**
ANTIBODIES

www.bioss.com.cn

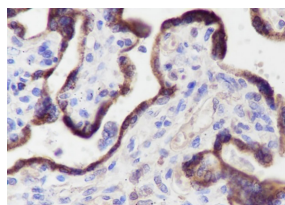
sales@bioss.com.cn

techsupport@bioss.com.cn

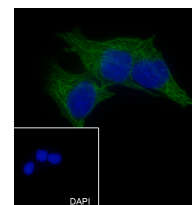
400-901-9800

CYP11A1 Recombinant Mouse mAb**— DATASHEET —****Host:** Mouse**Isotype:** IgG1, Kappa**Clonality:** Recombinant**GeneID:** 1583**SWISS:** P05108**Target:** CYP11A1**Purification:** affinity purified by Protein G**Concentration:** 1mg/ml**Storage:** 0.01M TBS (pH7.4) with 1% BSA, 0.02% Proclin300 and 50% Glycerol.
Shipped at 4°C. Store at -20°C for one year. Avoid repeated freeze/thaw cycles.**Background:** This gene encodes a member of the cytochrome P450 superfamily of enzymes. The cytochrome P450 proteins are monooxygenases which catalyze many reactions involved in drug metabolism and synthesis of cholesterol, steroids and other lipids. This protein localizes to the mitochondrial inner membrane and catalyzes the conversion of cholesterol to pregnenolone, the first and rate-limiting step in the synthesis of the steroid hormones. Two transcript variants encoding different isoforms have been found for this gene. The cellular location of the smaller isoform is unclear since it lacks the mitochondrial-targeting transit peptide. [provided by RefSeq, Jul 2008]**Applications:** WB (1:500-1000)**IHC-P** (1:20-100)**IHC-F** (1:400-800)**IF** (1:20-100)**ICC/IF** (1:20-100)**Reactivity:** Human (predicted: Mouse, Rat)**Predicted MW.:** 53/57 kDa**Subcellular Location:** Cytoplasm**— VALIDATION IMAGES —**

Blocking buffer: 5% NFDm/TBST Primary ab dilution: 1:1000 Primary ab incubation condition: room temperature 2h Secondary ab: Goat Anti-Mouse IgG H&L (HRP) Lysate: JAR, HepG2 Protein loading quantity: 20 µg Exposure time: 3 s Predicted MW: 52 kDa Observed MW: 52 kDa



Tissue: Human placenta Section type: Formalin fixed & Paraffin-embedded section Retrieval method: High temperature and high pressure Retrieval buffer: Tris/EDTA buffer, pH 9.0 Primary ab dilution: 1:100 Primary ab incubation condition: 1 hour at room temperature Secondary ab: SP Kit(Mouse)(sp-0024) Counter stain: Hematoxylin (Blue) Comment: Color brown is the positive signal for bsm-60352M



Cell line: HepG2 Fixative: 100% Ice-cold methanol Permeabilization: 0.1% TritonX-100 Primary ab dilution: 1:50 Primary incubation condition: 4°C overnight Secondary ab: Goat Anti-Mouse IgG Nuclear counter stain: DAPI (Blue) Comment: Color green is the positive signal for bsm-60352M