

bsm-60266R**[Primary Antibody]****Bioss**
ANTIBODIES

www.bioss.com.cn

sales@bioss.com.cn

techsupport@bioss.com.cn

400-901-9800

Desmin Recombinant Rabbit mAb**— DATASHEET —**

Host: Rabbit
Clonality: Recombinant
GeneID: 1674
Target: Desmin
Immunogen: A synthesized peptide derived from human Desmin: 410-470.
Purification: affinity purified by Protein A
Concentration: 1mg/ml

Storage: 0.01M TBS (pH7.4) with 1% BSA, 0.02% Proclin300 and 50% Glycerol.
 Shipped at 4°C. Store at -20°C for one year. Avoid repeated freeze/thaw cycles.

Background: Desmin is a muscle-specific, type III intermediate filament that integrates the sarcolemma, Z disk, and nuclear membrane in sarcomeres and regulates sarcomere architecture. In adult striated muscle they form a fibrous network connecting myofibrils to each other and to the plasma membrane from the periphery of the Z line structures. Defects in Desmin are the cause of desmin related cardio skeletal myopathy (CSM) also known as desmin related myopathy (DRM). CSM is characterized by skeletal muscle weakness associated with cardiac conduction blocks, arrhythmias, restrictive heart failure, and by intracytoplasmic accumulation of desmin reactive deposits in cardiac and skeletal muscle cells. A desmin related myopathy can have a distal onset, it is then known as hereditary distal myopathy (HDM). Defects in Desmin are also the cause of dilated cardiomyopathy type 1I (CMD1I). CMD1I is an autosomal form of dilated cardiomyopathy characterized by ventricular dilatation and impaired systolic function. Antidesmin antibodies are useful in identification of tumours of myogenic origin

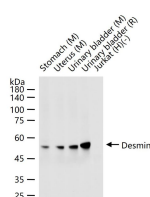
Isotype: IgG**CloneNo.:** 3B9**SWISS:** P17661

Applications: **WB** (1:500-5000)
IHC-P (1:100-500)
IHC-F (1:100-500)
IF (1:100-500)
ICC/IF (1:50-200)

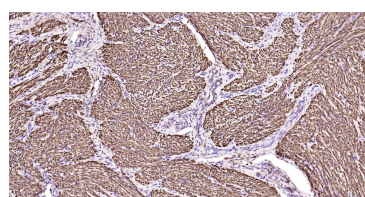
Reactivity: Human, Mouse, Rat

Predicted
MW.: 52 kDa

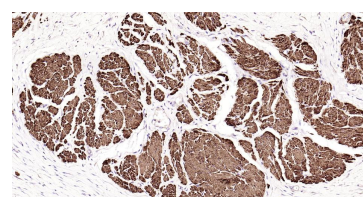
Subcellular
Location: Cytoplasm

— VALIDATION IMAGES —

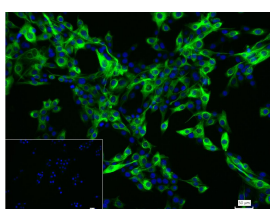
25 ug total protein per lane of various lysates (see on figure) probed with Desmin monoclonal antibody, unconjugated (bsm-60266R) at 1:5000 dilution and 4°C overnight incubation. Followed by conjugated secondary antibody incubation at r.t. for 60 min.



Paraformaldehyde-fixed, paraffin embedded Human Endometrial; Antigen retrieval by boiling in sodium citrate buffer (pH6.0) for 15 min; Antibody incubation with Desmin Monoclonal Antibody, Unconjugated(bsm-60266R) at 1:200 overnight at 4°C, followed by conjugation to the bs-0295G-HRP and DAB (C-0010) staining.



Paraformaldehyde-fixed, paraffin embedded Human Prostate Tumor; Antigen retrieval by boiling in sodium citrate buffer (pH6.0) for 15 min; Antibody incubation with Desmin Monoclonal Antibody, Unconjugated(bsm-60266R) at 1:200 overnight at 4°C, followed by conjugation to the bs-0295G-HRP and DAB (C-0010) staining.



4% Paraformaldehyde-fixed C2C12 (M) cell;

Important Note: This product as supplied is intended for research use only, not for use in human, therapeutic or diagnostic applications.

Triton X-100 at r.t. for 20 min; Antibody incubation with (Desmin) monoclonal Antibody, unconjugated (bsm-60266R) 1:100, 90 min at 37°C; followed by conjugated Goat Anti-Rabbit IgG antibody (green, bs-40295G-FITC) at 37°C for 90 min, DAPI (blue, C02-04002) was used to stain the cell nuclei. PBS instead of the primary antibody was used as the blank control.