

bs-42105R**[Primary Antibody]**

Complement C3d fragment Rabbit pAb

BioSS
ANTIBODIES

www.bioss.com.cn

sales@bioss.com.cn

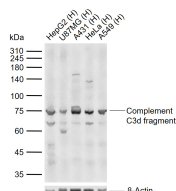
techsupport@bioss.com.cn

400-901-9800

DATASHEET

Host: Rabbit	Isotype: IgG	Applications: WB (1:500-2000)
Clonality: Polyclonal		
GeneID: 718	SWISS: P01024	
Target: Complement C3d fragment		
Immunogen: Recombinant human Complement C3d fragment protein: 1002-1663/1663.		
Purification: affinity purified by Protein A		Reactivity: Human (predicted: Mouse, Rat)
Concentration: 1mg/ml		
Storage: 0.01M TBS (pH7.4) with 1% BSA, 0.02% Proclin300 and 50% Glycerol. Shipped at 4°C. Store at -20°C for one year. Avoid repeated freeze/thaw cycles.		
Background: The complement factor C3 consists of an alpha and a beta chain. C3 is a central factor in the complement cascade. It is central to the alternative pathway that leads to the C3 convertase C3bBb. The classical mannose binding lectin activation pathway leads to the C3 convertase C4b2a. These convertases cleave C3 resulting in C3a and C3b. Further degradation leads to the formation of the alpha chain products C3d, C3g and C3c. C3 is an acute phase protein that is produced by a wide range of tissues, including renal epithelial cells and hepatocytes.		
		Predicted MW.: 33/109/187 kDa
		Subcellular Location: Secreted

VALIDATION IMAGES



Sample: Lane 1: Human HepG2 cell lysates Lane 2: Human U87MG cell lysates Lane 3: Human A431 cell lysates Lane 4: Human HeLa cell lysates Lane 5: Human A549 cell lysates Primary: Anti-Complement C3d fragment (bs-42105R) at 1/1000 dilution Secondary: IRDye800CW Goat Anti-Rabbit IgG at 1/20000 dilution Predicted band size: 33/109/187 kDa Observed band size: 75 kDa