

bs-5837R**[Primary Antibody]****EPDR1 Rabbit pAb****Bioss**
ANTIBODIES

www.bioss.com.cn

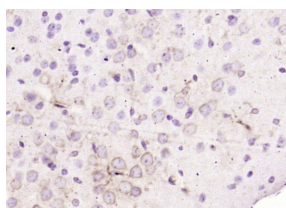
sales@bioss.com.cn

techsupport@bioss.com.cn

400-901-9800

— DATASHEET —

Host: Rabbit	Isotype: IgG	Applications: IHC-P (1:100-500) IHC-F (1:100-500) IF (1:100-500) Reactivity: Mouse (predicted: Human, Rat, Cow, Horse) Predicted MW.: 25 kDa Subcellular Location: Secreted
Clonality: Polyclonal		
GeneID: 54749	SWISS: Q9UM22	
Target: EPDR1		
Immunogen: KLH conjugated synthetic peptide derived from human EPDR1: 31-130/224.		
Purification: affinity purified by Protein A		
Concentration: 1mg/ml		
Storage: 0.01M TBS (pH7.4) with 1% BSA, 0.02% Proclin300 and 50% Glycerol. Shipped at 4°C. Store at -20°C for one year. Avoid repeated freeze/thaw cycles.		
Background: EPDR1 is a type II transmembrane protein and is similar to two families of cell adhesion molecules, the protocadherins and ependymins. It may play a role in calcium dependent cell adhesion. There are two named isoforms.		

— VALIDATION IMAGES —

Paraformaldehyde-fixed, paraffin embedded (mouse brain); Antigen retrieval by boiling in sodium citrate buffer (pH6.0) for 15min; Block endogenous peroxidase by 3% hydrogen peroxide for 20 minutes; Blocking buffer (normal goat serum) at 37°C for 30min; Antibody incubation with (EPDR1) Polyclonal Antibody, Unconjugated (bs-5837R) at 1:200 overnight at 4°C, followed by operating according to SP Kit(Rabbit) (sp-0023) instructions and DAB staining.