

bs-19404R**[Primary Antibody]****PRPF40B Rabbit pAb****Bioss**
ANTIBODIES

www.bioss.com.cn

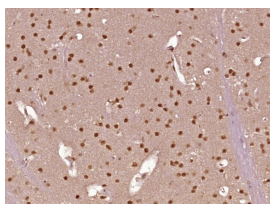
sales@bioss.com.cn

techsupport@bioss.com.cn

400-901-9800

— DATASHEET —

Host: Rabbit	Isotype: IgG	Applications: IHC-P (1:100-500) IHC-F (1:100-500) IF (1:100-500) Reactivity: Mouse (predicted: Human, Rat, Rabbit, Pig, Sheep, Cow, Dog, Horse) Predicted MW.: 99 kDa Subcellular Location: Nucleus
Clonality: Polyclonal		
GeneID: 25766	SWISS: Q6NWX9	
Target: PRPF40B		
Immunogen: KLH conjugated synthetic peptide derived from human PRPF40B: 781-871/871.		
Purification: affinity purified by Protein A		
Concentration: 1mg/ml		
Storage: 0.01M TBS (pH7.4) with 1% BSA, 0.02% Proclin300 and 50% Glycerol. Shipped at 4°C. Store at -20°C for one year. Avoid repeated freeze/thaw cycles.		
Background: This gene encodes a WW-domain containing protein similar to yeast splicing factor PRP40. This protein has been shown to interact with Huntingtin and methyl CpG binding protein 2 (MeCP2). Alternative splicing results in different transcript variants. [provided by RefSeq, Aug 2014]		

— VALIDATION IMAGES —

Paraformaldehyde-fixed, paraffin embedded (mouse brain tissue); Antigen retrieval by boiling in sodium citrate buffer (pH6.0) for 15min; Block endogenous peroxidase by 3% hydrogen peroxide for 20 minutes; Blocking buffer (normal goat serum) at 37°C for 30min; Antibody incubation with (PRPF40B) Polyclonal Antibody, Unconjugated (bs-19404R) at 1:400 overnight at 4°C, followed by operating according to SP Kit(Rabbit) (sp-0023) instructions and DAB staining.