

Klotho Rabbit pAb

Catalog Number: bs-2925R

Target Protein: Klotho

Concentration: 1mg/ml

Form: Liquid

Host: Rabbit

Clonality: Polyclonal

Isotype: IgG

Applications: WB (1:200-2000), IHC-P (1:100-500), IHC-F (1:100-500), IF (1:100-500)

Reactivity: Human, Mouse, Rat (predicted:Rabbit, Pig, Cow, Dog, Horse)

Predicted MW: 113 kDa

Entrez Gene: 9365

Swiss Prot: Q9UEF7

Source: KLH conjugated synthetic peptide derived from human Klotho: 401-500/1012.

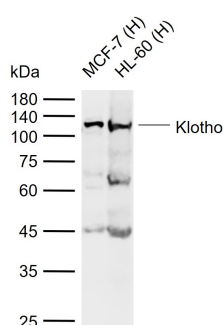
Purification: affinity purified by Protein A

Storage: 0.01M TBS (pH7.4) with 1% BSA, 0.02% Proclin300 and 50% Glycerol.

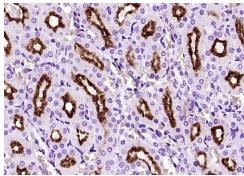
Shipped at 4°C. Store at -20°C for one year. Avoid repeated freeze/thaw cycles.

Background: May have weak glycosidase activity towards glucuronylated steroids. However, it lacks essential active site Glu residues at positions 239 and 872, suggesting it may be inactive as a glycosidase in vivo. May be involved in the regulation of calcium and phosphorus homeostasis by inhibiting the synthesis of active vitamin D (By similarity). Essential factor for the specific interaction between FGF23 and FGFR1. The Klotho peptide generated by cleavage of the membrane-bound isoform may be an anti-aging circulating hormone which would extend life span by inhibiting insulin/IGF1 signaling.

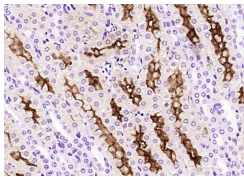
VALIDATION IMAGES



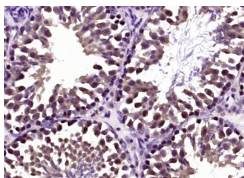
Sample: Lane 1: Human MCF-7 cell lysates Lane 2: Human HL-60 cell lysates Primary: Anti-Klotho (bs-2925R) at 1/200 dilution Secondary: IRDye800CW Goat Anti-Rabbit IgG at 1/20000 dilution Predicted band size: 113 kDa Observed band size: 130 kDa



Paraformaldehyde-fixed, paraffin embedded (Mouse kidney); Antigen retrieval by boiling in sodium citrate buffer (pH6.0) for 15min; Block endogenous peroxidase by 3% hydrogen peroxide for 20 minutes; Blocking buffer (normal goat serum) at 37°C for 30min; Antibody incubation with (Klotho) Polyclonal Antibody, Unconjugated (bs-2925R) at 1:400 overnight at 4°C, followed by operating according to SP Kit(Rabbit) (sp-0023) instructions and DAB staining.



Paraformaldehyde-fixed, paraffin embedded (Rat kidney); Antigen retrieval by boiling in sodium citrate buffer (pH6.0) for 15min; Block endogenous peroxidase by 3% hydrogen peroxide for 20 minutes; Blocking buffer (normal goat serum) at 37°C for 30min; Antibody incubation with (Klotho) Polyclonal Antibody, Unconjugated (bs-2925R) at 1:400 overnight at 4°C, followed by operating according to SP Kit(Rabbit) (sp-0023) instructions and DAB staining.



Paraformaldehyde-fixed, paraffin embedded (Mouse testis); Antigen retrieval by boiling in sodium citrate buffer (pH6.0) for 15min; Block endogenous peroxidase by 3% hydrogen peroxide for 20 minutes; Blocking buffer (normal goat serum) at 37°C for 30min; Antibody incubation with (Klotho) Polyclonal Antibody, Unconjugated (bs-2925R) at 1:400 overnight at 4°C, followed by operating according to SP Kit(Rabbit) (sp-0023) instructions and DAB staining.

PRODUCT SPECIFIC PUBLICATIONS

[IF=5.458] Amelia K. Fotheringham. et al. Kidney disease risk factors do not explain impacts of low dietary protein on kidney function and structure. *Iscience*. 2021 Oct;;103308 IF ; Mouse . 10.1016/j.isci.2021.103308

[IF=4.9] Xiangjuan Guo. et al. Network Pharmacology and Transcriptomics to Explore the Pharmacological Mechanisms of 20(S)-Protopanaxatriol in the Treatment of Depression. *INT J MOL SCI*. 2024 Jul; 25(14): 7574 WB ; Mouse . 39062817

[IF=4.285] Stenhouse Claire. et al. Effects of progesterone and interferon tau on ovine endometrial phosphate, calcium, and vitamin D signaling. *Biol Reprod*. 2022 Feb;; IHC ; Sheep (Ewe) . 10.1093/biolre/ioac027

[IF=3.699] Xiao-Tan Zhang . et al. Baicalin reversal of DNA hypermethylation-associated Klotho suppression ameliorates renal injury in type 1 diabetic mouse model. *Cell Cycle*. 2020;19(23):3329-3347 WB ; Mouse . 33190590

[IF=3.293] Shikida Y et al. Effect of Continuous Intravenous Calcium Loading on Fibroblast Growth Factor 23 in Normal and Uremic Rats. *Calcif Tissue Int*. 2018 Jun 7. IHC ; Rat . 29882057