

bs-5778R**[Primary Antibody]****BioSS**
ANTIBODIES

www.bioss.com.cn

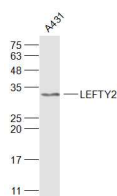
sales@bioss.com.cn

techsupport@bioss.com.cn

400-901-9800

TGFB4/LEFTY2 Rabbit pAb**— DATASHEET —**

Host: Rabbit	Isotype: IgG	Applications: WB (1:500-2000)
Clonality: Polyclonal		Reactivity: Human (predicted: Mouse, Rat)
GeneID: 7044	SWISS: O00292	
Target: TGFB4/LEFTY2		Predicted MW.: 32 kDa
Immunogen: KLH conjugated synthetic peptide derived from human TGFB4: 281-366/366.		Subcellular Location: Secreted
Purification: affinity purified by Protein A		
Concentration: 1mg/ml		
Storage: 0.01M TBS (pH7.4) with 1% BSA, 0.02% Proclin300 and 50% Glycerol. Shipped at 4°C. Store at -20°C for one year. Avoid repeated freeze/thaw cycles.		
Background: LEFTY2 is a member of the TGF-beta family of proteins. LEFTY2 is secreted and plays a role in left-right asymmetry determination of organ systems during development and may also play a role in endometrial bleeding. Mutations in this gene have been associated with left-right axis malformations, particularly in the heart and lungs. Some types of infertility have been associated with dysregulated expression of this gene in the endometrium. Alternative processing of this protein can yield three different products. This gene is closely linked to both a related family member and a related pseudogene.		

— VALIDATION IMAGES —

Sample: A431(Human) Cell Lysate at 30 ug
Primary: Anti-LEFTY2 (bs-5778R) at 1/1000
dilution Secondary: IRDye800CW Goat Anti-
Rabbit IgG at 1/20000 dilution Predicted band
size: 32 kD Observed band size: 32 kD