

**bsm-51328M****[ Primary Antibody ]****RBM6 Mouse mAb****BioSS**  
**ANTIBODIES**

www.bioss.com.cn

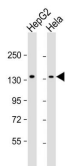
sales@bioss.com.cn

techsupport@bioss.com.cn

400-901-9800

**— DATASHEET —**

<b>Host:</b> Mouse	<b>Isotype:</b> IgG1, k	<b>Applications:</b> <b>WB</b> (1:500-1000) <b>ELISA</b> (1:5000-10000)
<b>Clonality:</b> Monoclonal		
<b>GeneID:</b> 10180	<b>SWISS:</b> P78332	<b>Reactivity:</b> Human
<b>Target:</b> RBM6		
<b>Purification:</b> affinity purified by Protein A		
<b>Concentration:</b> 1mg/ml		<b>Predicted MW.:</b> 129 kDa
<b>Storage:</b> PBS with 0.02% Proclin300. Shipped at 4°C. Store at -20°C for one year. Avoid repeated freeze/thaw cycles.		<b>Subcellular Location:</b> Nucleus
<b>Background:</b> Enables RNA binding activity. Predicted to be involved in mRNA splicing, via spliceosome. Predicted to be active in nucleus. [provided by Alliance of Genome Resources, Apr 2022]		

**— VALIDATION IMAGES —**

All lanes : Anti-RBM6 Antibody at 1:1000 dilution  
Lane 1: HepG2 whole cell lysate Lane 2: Hela whole cell lysate Lysates/proteins at 20 µg per lane. Secondary Goat Anti-mouse IgG, (H+L), Peroxidase conjugated at 1/10000 dilution.  
Predicted band size : 129 kDa Blocking/Dilution buffer: 5% NFDM/TBST.