

**bs-5777R****[ Primary Antibody ]****Bioss**  
ANTIBODIES

www.bioss.com.cn

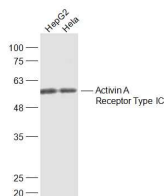
sales@bioss.com.cn

techsupport@bioss.com.cn

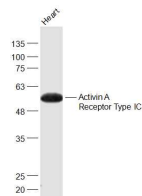
400-901-9800

**Activin A Receptor Type IC Rabbit pAb****— DATASHEET —**

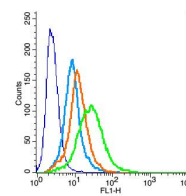
<b>Host:</b> Rabbit	<b>Isotype:</b> IgG	<b>Applications:</b> <b>WB</b> (1:500-2000) <b>Flow-Cyt</b> (3µg/Test)
<b>Clonality:</b> Polyclonal		
<b>GeneID:</b> 130399	<b>SWISS:</b> Q8NER5	
<b>Target:</b> Activin A Receptor Type IC		
<b>Immunogen:</b> KLH conjugated synthetic peptide derived from human ACTRIC/Activin A Receptor Type IC: 21-120/493.		
<b>Purification:</b> affinity purified by Protein A		
<b>Concentration:</b> 1mg/ml		
<b>Storage:</b> 0.01M TBS (pH7.4) with 1% BSA, 0.02% Proclin300 and 50% Glycerol. Shipped at 4°C. Store at -20°C for one year. Avoid repeated freeze/thaw cycles.		
<b>Background:</b> Serine/threonine protein kinase which forms a receptor complex on ligand binding. The receptor complex consisting of 2 type II and 2 type I transmembrane serine/threonine kinases. Type II receptors phosphorylate and activate type I receptors which autophosphorylate, then bind and activate SMAD transcriptional regulators, SMAD2 and SMAD3. Receptor for activin AB, activin B and NODAL. Plays a role in cell differentiation, growth arrest and apoptosis.		
		<b>Reactivity:</b> Human, Mouse, Rat (predicted: Rabbit, Pig, Cow, Dog)
		<b>Predicted MW.:</b> 53 kDa
		<b>Subcellular Location:</b> Cell membrane

**— VALIDATION IMAGES —**

Sample: HepG2(Human) Cell Lysate at 30 ug  
Hela(Human) Cell Lysate at 30 ug Primary: Anti-Activin A Receptor Type IC (bs-5777R) at 1/1000 dilution Secondary: IRDye800CW Goat Anti-Rabbit IgG at 1/20000 dilution Predicted band size: 53 kD Observed band size: 53 kD



Sample: Heart (Mouse) Lysate at 40 ug Primary: Anti-Activin A Receptor Type IC (bs-5777R) at 1/1000 dilution Secondary: IRDye800CW Goat Anti-Rabbit IgG at 1/20000 dilution Predicted band size: 53 kD Observed band size: 53 kD



Blank control: H9C2 (blue) Isotype Control Antibody: Rabbit IgG(orange) ; Secondary Antibody: Goat anti-rabbit IgG-FITC(white blue), Dilution: 1:100 in 1 X PBS containing 0.5% BSA ; Primary Antibody Dilution: 3µl in 100 µL1X PBS containing 0.5% BSA(green).