

bs-19388R**[Primary Antibody]****SAPS1 Rabbit pAb****BioSS**
ANTIBODIES

www.bioss.com.cn

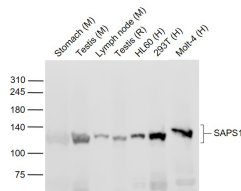
sales@bioss.com.cn

techsupport@bioss.com.cn

400-901-9800

— DATASHEET —

Host: Rabbit	Isotype: IgG	Applications: WB (1:500-2000)
Clonality: Polyclonal		
GeneID: 22870	SWISS: Q9UPN7	
Target: SAPS1		
Immunogen: KLH conjugated synthetic peptide derived from human SAPS1: 31-130/881.		Reactivity: Human, Mouse, Rat (predicted: Rabbit, Pig, Cow, Dog, Horse, Rhesus monkey, Gorilla, Orangutan)
Purification: affinity purified by Protein A		Predicted MW.: 97 kDa
Concentration: 1mg/ml		Subcellular Location: Cytoplasm
Storage: 0.01M TBS (pH7.4) with 1% BSA, 0.02% Proclin300 and 50% Glycerol. Shipped at 4°C. Store at -20°C for one year. Avoid repeated freeze/thaw cycles.		
Background: Protein phosphatase regulatory subunits, such as SAPS1, modulate the activity of protein phosphatase catalytic subunits by restricting substrate specificity, recruiting substrates, and determining the intracellular localization of the holoenzyme. SAPS1 is a regulatory subunit for the protein phosphatase-6 catalytic subunit (PPP6C; MIM 612725) (Stefansson and Brautigan, 2006 [PubMed 16769727]).[supplied by OMIM, Nov 2010]		

— VALIDATION IMAGES —

Sample: Lane 1: Stomach (Mouse) Lysate at 40 ug
 Lane 2: Testis (Mouse) Lysate at 40 ug
 Lane 3: Lymph node (Mouse) Lysate at 40 ug
 Lane 4: Testis (Rat) Lysate at 40 ug
 Lane 5: HL60 (Human) Cell Lysate at 30 ug
 Lane 6: 293T (Human) Cell Lysate at 30 ug
 Lane 7: Molt-4 (Human) Cell Lysate at 30 ug
 Primary: Anti-SAPS1 (bs-19388R) at 1/1000 dilution
 Secondary: IRDye800CW Goat Anti-Rabbit IgG at 1/20000 dilution
 Predicted band size: 120 kD
 Observed band size: 120 kD