

PMCA3 Rabbit pAb

Catalog Number: bs-20009R

Target Protein: PMCA3

Concentration: 1mg/ml

Form: Liquid

Host: Rabbit

Clonality: Polyclonal

Isotype: IgG

Applications: WB (1:500-2000)

Reactivity: Human (predicted: Mouse, Rat, Pig, Cow, Dog, Horse)

Predicted MW: 134 kDa

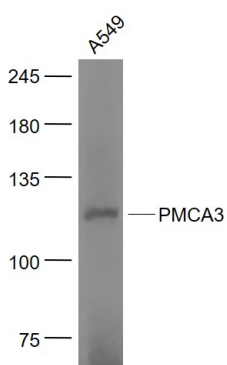
Source: KLH conjugated synthetic peptide derived from human PMCA3: 971-1070/1220.

Purification: affinity purified by Protein A

Storage: 0.01M TBS (pH7.4) with 1% BSA, 0.02% Proclin300 and 50% Glycerol.

Shipped at 4°C. Store at -20°C for one year. Avoid repeated freeze/thaw cycles.

VALIDATION IMAGES



Sample: A549(Human) Cell Lysate at 30 ug Primary: Anti- PMCA3 (bs-20009R) at 1/1000 dilution Secondary: IRDye800CW Goat Anti-Rabbit IgG at 1/20000 dilution Predicted band size: 134 kD Observed band size: 122 kD