

bs-5838R**[Primary Antibody]****ESAM Rabbit pAb****Bioss**
ANTIBODIES

www.bioss.com.cn

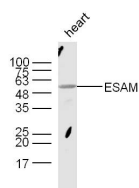
sales@bioss.com.cn

techsupport@bioss.com.cn

400-901-9800

— DATASHEET —

Host: Rabbit	Isotype: IgG	Applications: WB (1:500-2000)
Clonality: Polyclonal		Reactivity: Mouse (predicted: Human, Rat)
GeneID: 90952	SWISS: Q96AP7	
Target: ESAM		Predicted MW.: 37-41 kDa
Immunogen: KLH conjugated synthetic peptide derived from human ESAM: 21-120/390.		Subcellular Location: Cell membrane
Purification: affinity purified by Protein A		
Concentration: 1mg/ml		
Storage: 0.01M TBS (pH7.4) with 1% BSA, 0.02% Proclin300 and 50% Glycerol. Shipped at 4°C. Store at -20°C for one year. Avoid repeated freeze/thaw cycles.		
Background: Can mediate aggregation most likely through a homophilic molecular interaction.		

— VALIDATION IMAGES —

Sample: heart (Mouse) Lysate at 40 ug Primary:
Anti-ESAM (bs-5838R) at 1/300 dilution
Secondary: IRDye800CW Goat Anti-Rabbit IgG at
1/20000 dilution Predicted band size: 37/41 kD
Observed band size: 55/48 kD

— SELECTED CITATIONS —

- **[IF=29]** Zilong Zhang. et al. Targeting Erbin-mitochondria axis in platelets/megakaryocytes promotes B cell-mediated antitumor immunity. CELL METAB. 2024 Jan 16 IF,CoIP ;Mouse,Human. 38232736