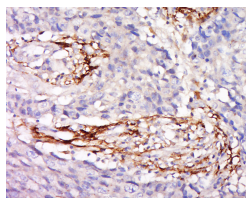

Zinc Alpha 2 Glycoprotein Rabbit pAb

Catalog Number: bs-19382R
Target Protein: Zinc Alpha 2 Glycoprotein
Concentration: 1mg/ml
Form: Liquid
Host: Rabbit
Clonality: Polyclonal
Isotype: IgG
Applications: IHC-P (1:100-500), IHC-F (1:100-500), IF (1:100-500)
Reactivity: Human
Predicted MW: 32 kDa
Subcellular: Secreted
Locations:
Entrez Gene: 563
Swiss Prot: P25311
Source: KLH conjugated synthetic peptide derived from human Zinc Alpha 2 Glycoprotein: 21-120/295.
Purification: affinity purified by Protein A
Storage: 0.01M TBS (pH7.4) with 1% BSA, 0.02% Proclin300 and 50% Glycerol.
Shipped at 4°C. Store at -20°C for one year. Avoid repeated freeze/thaw cycles.

VALIDATION IMAGES



Tissue/cell: Human colon carcinoma; 4% Paraformaldehyde-fixed and paraffin-embedded; Antigen retrieval: citrate buffer (0.01M, pH 6.0), Boiling bathing for 15min; Block endogenous peroxidase by 3% Hydrogen peroxide for 30min; Blocking buffer (normal goat serum,C-0005) at 37°C for 20 min; Incubation: Anti-ZA2G Polyclonal Antibody, Unconjugated(bs-19382R) 1:500, overnight at 4°C, followed by conjugation to the secondary antibody(SP-0023) and DAB(C-0010) staining