

bs-19364R**[Primary Antibody]****SAE1 Rabbit pAb****BioSS**
ANTIBODIES

www.bioss.com.cn

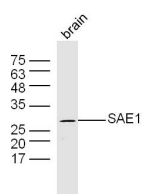
sales@bioss.com.cn

techsupport@bioss.com.cn

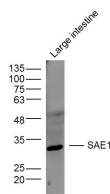
400-901-9800

— DATASHEET —

Host: Rabbit	Isotype: IgG	Applications: WB (1:500-2000)
Clonality: Polyclonal		Reactivity: Mouse (predicted: Human, Rat)
GeneID: 10055	SWISS: Q9UBE0	
Target: SAE1		Predicted MW.: 29 kDa
Immunogen: KLH conjugated synthetic peptide derived from human SAE1,Isoform 2: 1-100/346.		Subcellular Location: Nucleus
Purification: affinity purified by Protein A		
Concentration: 1mg/ml		
Storage: 0.01M TBS (pH7.4) with 1% BSA, 0.02% Proclin300 and 50% Glycerol. Shipped at 4°C. Store at -20°C for one year. Avoid repeated freeze/thaw cycles.		
Background: Posttranslational modification of proteins by the addition of the small protein SUMO (see SUMO1; MIM 601912), or sumoylation, regulates protein structure and intracellular localization. SAE1 and UBA2 (MIM 613295) form a heterodimer that functions as a SUMO-activating enzyme for the sumoylation of proteins (Okuma et al., 1999 [PubMed 9920803]).[supplied by OMIM, Mar 2010]		

— VALIDATION IMAGES —

Sample: brain (mouse) Lysate at 40 ug Primary:
Anti-SAE1(bs-19364R) at 1/300 dilution
Secondary: IRDye800CW Goat Anti-Rabbit IgG at
1/20000 dilution Predicted band size: 29 kD
Observed band size: 29 kD



Sample: Large intestine (Mouse) Lysate at 40 ug
Primary: Anti- SAE1 (bs-19364R) at 1/300 dilution
Secondary: IRDye800CW Goat Anti-Rabbit IgG at
1/20000 dilution Predicted band size: 38 kD
Observed band size: 30 kD