

bs-19360R

[Primary Antibody]

SAAL1 Rabbit pAb

BioSS
ANTIBODIES

www.bioss.com.cn

sales@bioss.com.cn

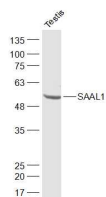
techsupport@bioss.com.cn

400-901-9800

— DATASHEET —

Host: Rabbit	Isotype: IgG	Applications: WB (1:500-2000)
Clonality: Polyclonal		
GeneID: 113174	SWISS: Q96ER3	
Target: SAAL1		
Immunogen: KLH conjugated synthetic peptide derived from human SAAL1: 371-474/474.		
Purification: affinity purified by Protein A		Reactivity: Mouse (predicted: Human, Rat)
Concentration: 1mg/ml		Predicted MW.: 54 kDa
Storage: 0.01M TBS (pH7.4) with 1% BSA, 0.02% Proclin300 and 50% Glycerol. Shipped at 4°C. Store at -20°C for one year. Avoid repeated freeze/thaw cycles.		Subcellular Location: Secreted

— VALIDATION IMAGES —



Sample: Testis (Mouse) Lysate at 40 ug Primary:
Anti-SAAL1 (bs-19360R) at 1/1000 dilution
Secondary: IRDye800CW Goat Anti-Rabbit IgG at
1/20000 dilution Predicted band size: 54 kD
Observed band size: 54 kD