

PRL Rabbit pAb

Catalog Number: bs-43099R

Target Protein: PRL

Concentration: 1mg/ml

Form: Liquid

Host: Rabbit

Clonality: Polyclonal

Isotype: IgG

Applications: WB (1:500-2000), IHC-P (1:100-500), IHC-F (1:400-800), IF (1:100-500)

Reactivity: Human

Predicted MW: 24 kDa

Entrez Gene: 5617

Swiss Prot: P01236

Source: Recombinant human PRL protein: 29-227/227.

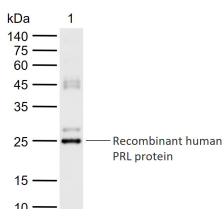
Purification: affinity purified by Protein A

Storage: 0.01M TBS (pH7.4) with 1% BSA, 0.02% Proclin300 and 50% Glycerol.

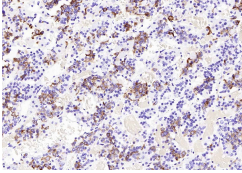
Shipped at 4°C. Store at -20°C for one year. Avoid repeated freeze/thaw cycles.

Background: This gene encodes the anterior pituitary hormone prolactin. This secreted hormone is a growth regulator for many tissues, including cells of the immune system. It may also play a role in cell survival by suppressing apoptosis, and it is essential for lactation. Alternative splicing results in multiple transcript variants that encode the same protein. [provided by RefSeq, Aug 2011].

VALIDATION IMAGES



Sample: Lane 1: Recombinant human PRL protein, N-His (HEK293)(bs-43099P) Primary: Anti-PRL (bs-43099R) at 1/1000 dilution Secondary: IRDye800CW Goat Anti-Rabbit IgG at 1/20000 dilution Predicted band size: 24 kDa Observed band size: 25 kDa



Paraformaldehyde-fixed, paraffin embedded (human pituitary); Antigen retrieval by boiling in sodium citrate buffer (pH6.0) for 15min; Block endogenous peroxidase by 3% hydrogen peroxide for 20 minutes; Blocking buffer (normal goat serum) at 37°C for 30min; Antibody incubation with (PRL) Polyclonal Antibody, Unconjugated (bs-43099R) at 1:300 overnight at 4°C, followed by operating according to SP Kit(Rabbit) (sp-0023) instructions and DAB staining.