
GPR52 Rabbit pAb

Catalog Number: bs-13539R

Target Protein: GPR52

Concentration: 1mg/ml

Form: Liquid

Host: Rabbit

Clonality: Polyclonal

Isotype: IgG

Applications: WB (1:500-2000), IHC-P (1:100-500), IHC-F (1:100-500), IF (1:100-500)

Reactivity: Human (predicted:Mouse, Rat, Rabbit, Sheep, Cow, Horse)

Predicted MW: 41 kDa

Entrez Gene: 9293

Swiss Prot: Q9Y2T5

Source: KLH conjugated synthetic peptide derived from human GPR52: 151-250/361.

Purification: affinity purified by Protein A

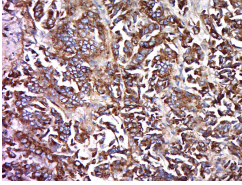
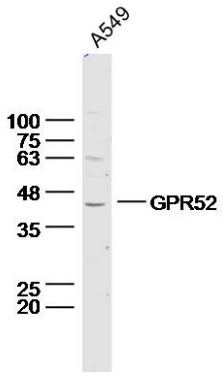
Storage: 0.01M TBS (pH7.4) with 1% BSA, 0.02% Proclin300 and 50% Glycerol.

Shipped at 4°C. Store at -20°C for one year. Avoid repeated freeze/thaw cycles.

Background: G protein-coupled receptors (GPRs), also known as seven transmembrane receptors, heptahelical receptors or 7TM receptors, comprise a superfamily of proteins that play a role in many different stimulus-response pathways. G protein coupled receptors translate extracellular signals into intracellular signals (G protein activation) and they respond to a variety of signaling molecules, such as hormones and neurotransmitters. GPR52 (G protein-coupled receptor 52) is a 361 amino acid multi-pass membrane protein that belongs to the G-protein coupled receptor 1 family and has been found to be expressed in the caudate and putamen regions of the brain. The gene encoding GPR52 maps to human chromosome 1, the largest human chromosome spanning about 260 million base pairs and making up 8% of the human genome.

VALIDATION IMAGES

Sample: A549 Cell Lysate at 40 ug Primary: Anti-GPR52 (bs-13539R) at 1/300 dilution Secondary: IRDye800CW Goat Anti-Rabbit IgG at 1/20000 dilution Predicted band size: 41 kD Observed band size: 41 kD



Tissue/cell: human lung carcinoma; 4% Paraformaldehyde-fixed and paraffin-embedded; Antigen retrieval: citrate buffer (0.01M, pH 6.0), Boiling bathing for 15min; Block endogenous peroxidase by 3% Hydrogen peroxide for 30min; Blocking buffer (normal goat serum, C-0005) at 37°C for 20 min; Incubation: Anti-GPR52 Polyclonal Antibody, Unconjugated(bs-13539R) 1:500, overnight at 4°C, followed by conjugation to the secondary antibody(SP-0023) and DAB(C-0010) staining